

COACH®



Accolade XT

Serial #: 1JSNECBT2R1JL8066
Model: 35L ACCOLADE XT MHC
VIN#: 1FDF6L73PDA05774
Model Year: 2024 Dealer Name: NATIONAL INDOOR RV CENTERS



Manufacturer's Suggested Retail Price \$362,228.00

TOTAL AMOUNT DOES NOT INCLUDE STATE AND LOCAL TAXES OR LICENSE FEES. THE PRICE SHOWN ABOVE MAY OR MAY NOT BE REPRESENTATIVE OF THE ACTUAL SELLING PRICE OF SIMILAR RECREATIONAL VEHICLES IN YOUR AREA.

Standard Equipment

THE FOLLOWING ITEMS ARE STANDARD ON THIS MODEL
AT NO EXTRA CHARGE

Optional Equipment

OPTIONAL EQUIPMENT INSTALLED ON THIS VEHICLE
BY MANUFACTURER

STANDARD INTERIOR EQUIPMENT

- Ford SYNC3's infotainment center with navigation
- Audible lane departure warning
- Pre-Collision Assist with automatic emergency braking (AEB)
- Ford's Post-Crash Alert System™
- Driver and passenger airbags
- Safety Canopy® system with rollover-side curtain airbags
- Remote keyless entry and perimeter anti-theft alarm
- SecurLock® anti-theft ignition
- Quad dual-beam halogen headlights
- Rain-X® wiper activated headlight
- Remote start
- 12-speaker premium audio
- Individual tire pressure monitoring system (TPMS)
- Cruise control
- Power windows and door locks

Base price

- WARM RIVER
HUNTINGTON CABINETRY
PARCHED EARTH PAINT
PACKAGE
USA STANDARDS
CUSTOMER VALUE PACKAGE
RESIDENTIAL REFRIGERATOR
WASHER/DRYER COMBO
IN MOTION DISH SATELLITE
SYSTEM
THEATER SEATING SOFA
W/POWER

328 050 00

- | | |
|-----------|-----|
| 1,125.00 | n/c |
| 1,943.00 | n/c |
| 31,050.00 | n/c |
| 30.00 | n/c |
| 30.00 | n/c |
| 1,000.00 | n/c |

DIMENSIONS

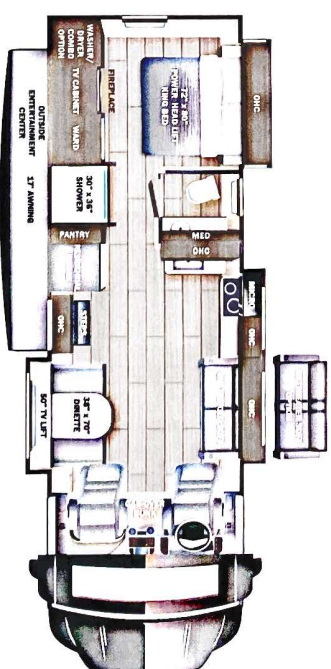
| | | | |
|-----------------------|---------|------------------------------|-------|
| Exterior height:..... | 144.00" | Fresh water tank (gals.):... | 60.00 |
| Exterior width:..... | 101.00" | Gray water tank (gals.):... | 30.00 |

CAPACITIES

| | |
|---------------------------------|-------|
| Fresh water tank (gals.) | 60.00 |
| Gray water tank (gals.) | 30.00 |
| Black water/toilet tank (gals.) | 30.00 |
| Propane (lbs.) | 83 |
| Propane (gals.) | 19 |
| Water heater (gals.) | 6.00 |

TIRES

Tire size (front):.....245/70R19.5G
Tire size (mid):.....
Tire size (rear):.....245/70R19.5G



Some dimensions may be rounded and may vary from the actual dimensions
 Weights may be estimated calculations and may vary from the actual weight
 - refer to the vehicle weight labels for actual weights
 Floorplans, features and specifications are subject to change without notice.