

Cornerstone



Serial #: 1JSMEACV6P16D8076
Model: 45D CORNERSTONE MHA
VIN#: 4VZVU1R11PC093694
Model Year: 2023 Dealer Name: NATIONAL INDOOR RV CENTERS
1350 HURRICANE SHOALS ROAD
LAWRENCEVILLE, GA 30043
USA



Standard Equipment

Optional Equipment

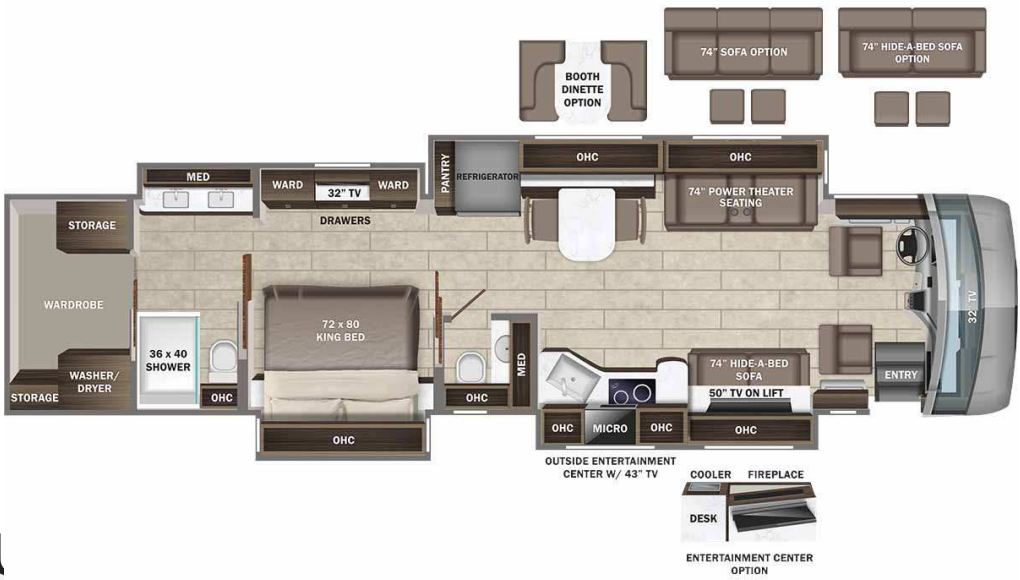
THE FOLLOWING ITEMS ARE STANDARD ON THIS MODEL AT NO EXTRA CHARGE

OPTIONAL EQUIPMENT INSTALLED ON THIS VEHICLE BY MANUFACTURER

EXTERIOR <ul style="list-style-type: none">- Spartan® K3 raised-rail chassis- Cummins® 15 liter X15 turbocharged 605 HP engine with 1,950 lb. ft. torque at 1,150 RPM- Allison® 4,000 MH 6-speed transmission- Three-stage engine brake- Collision avoidance system with collision warning, adaptive cruise control and electronic stability control- Meritor® front axle with independent front suspension, integrated anti-sway bar and custom-tuned Koni® shocks- 20,000 lb. rating- Dana® rear axle - 20,000 lb. rating- Reyco® Granning® passive-steer tag axle with one-touch manual air dump - 14,000 lb. rating- All-wheel ABS disc brakes- Michelin® 365/70R 22.5 in. tires (front) and 315/80R 22.5 in. tires (rear)- Tire pressure monitoring system (TPMS) with temperature monitoring- Automatic traction control- Equalizer™ hydraulic automatic coach leveling- Valid™ Truline air leveling system with auxiliary air compressor- 20,000 lb. hitch with 7-pin plug- Aqua-Hot® heated basement storage- Onan® 12,500W diesel generator, with automatic start, on powered slide-out tray- 3,000W pure sine wave inverter- (4) L16 AGM batteries (6V/390 amp hrs. ea.)- (2) 190W solar panels- 50 amp power cord on electric powered reel- Dual-zone HVAC system- (3) 15,000 BTU A/C units with heat pumps and condensation drain system- Aqua-Hot® 450D hydronic water and heating system with in-floor heat throughout and engine preheat- Sani-Con® macerator holding tank dump system with power gate valves and manual backup- Water hose with electric reel- Dual roof-mounted Girard® Vision dual-pitched patio awnings,- Girard® power entrance door awning with LED lights- Girard® Ultra slideout awnings- Girard® Ultra power window awnings- Lit grab handle with doorbell and keypad system for keyless entry- 43 in. Samsung® QLED 4K UHD Smart TV with tilt, swivel, and extend adjustment- JBL® radio and speakers with USB port and receptacle- Chrome, heated, remote-control, side-view mirrors with blind-spot indicators- Automatic LED high and low beam headlights and fog lights- Winegard® TRAV'LER satellite dish DIRECTV®- Winegard® Rayzar Automatic powered TV antenna- Winegard® Wi-Fi Ranger™ Wi-Fi extender- (2) power slideout basement storage trays- 2.8 cu. ft. exterior Dometic® refrigerator/freezer on slideout tray- Push-button, power-unlatching baggage doors with LED indicator light	INTERIOR <ul style="list-style-type: none">- Valid™ 15 in. digital dash with quad core graphics processor, on-board diagnostics and ability to display traditional instrument cluster, 360° camera system or GPS navigation- Delta Mobile Systems® aiDARS™ 1X active 360° surround view system with 14 smart radar sensors and 6 HD cameras displayed on digital dash screen- Valid™ infotainment system with 15 in. touchscreen, Sygic navigation, Bluetooth®, Sirius XM™ and AM/FM tuner, integrated camera control, house mode whole-coach audio distribution and integrated VegaTouch coach control- 4.3 in. infotainment control touchscreen in passenger console- E-Z Steer™ adjustable power steering assist- Steering wheel with integrated controls for screen selection, instrument cluster navigation, media source selection, cruise, wipers and Bluetooth® phone functionality- Power tilt and telescoping steering column- JBL® premium audio 11-speaker sound system with amplifier, speakers and DVC subwoofer- Italian leather furniture- All-in-one automotive antenna for AM/FM/Sirius/GPS dash radio system- Ultra-Vision® one-piece wrap-around tinted windshield- Rain-sensing windshield wipers- 32 in. Samsung® QLED 4K UHD Smart TV in front overhead- Heated and cooled leather driver and passenger seats with powered 6-way adjustment, lumbar, recline, footrest and massage functions- Powered driver's window- Powered flush stepwell cover- Powered adjustable brake and accelerator pedals- Firefly multiplex system with 10 in. VegaTouch touchscreen for complete integration of coach controls, with remote monitoring and control (mobile app available)- 50 in. Samsung® QLED 4K UHD Smart TV- Bose® sound bar with subwoofer and universal remote control- Sony® Blu-ray™ player- Powered solar day and blackout night shades- Central vacuum system- Stainless steel residential refrigerator- Induction cooktop with matching wood cover- 1.9 cu. ft. convection microwave oven- Fisher & Paykel dishwasher- 32 in. Samsung® QLED 4K UHD Smart TV- Bose® sound bar with universal remote control- Individual washer and dryer	Base price906,480.00 Linenn/c Almond Cabinetry30.00 Exclude Linen Frontn/c Overhead Accent Wood30.00 Swiss Rhone Tile30.00 Coral Reef Paintn/c USA Standards23 SP 54000 320" 605 TAG AXLE 2021 EMISSIONS PA09n/c Dishwasher Drawern/c 12.5K Generatorn/c Winegard Trav'ler Satellite Antenna W/DISH Network113.00 AGM Battery n/c Booth Dinette1,793.00 Theater Seating Sofa D/S n/c Fireplace with TV Entertainment443.00
UNIT TOTAL		908,919.00
DEALER INSTALLED OPTIONS		

Manufacturer's Suggested Retail Price \$908,919.00

TOTAL AMOUNT DOES NOT INCLUDE STATE AND LOCAL TAXES OR LICENSE FEES. THE PRICE SHOWN ABOVE MAY OR MAY NOT BE REPRESENTATIVE OF THE ACTUAL SELLING PRICE OF SIMILAR RECREATIONAL VEHICLES IN YOUR AREA.



DIMENSIONS

Exterior height:.....152.00"
Exterior width:.....101.00"

CAPACITIES

Fresh water tank (gals.):..100.00
Gray water tank (gals.):....62.00
Black water/toilet tank (gals.):.....41.00
Propane (lbs.):.....0
Propane (gals.):.....0
Water heater (gals.):.....0.00

TIRES

Tire size (front):.....365/70R22.5
Tire size (mid):.....315/80R22.5
Tire size (rear):.....315/80R22.5

Some dimensions may be rounded and may vary from the acutal dimensions
***Weights may be estimated calculations and may vary from the actual weight
- refer to the vehicle weight labels for actual weights***
Floorplans, features and specifications are subject to change without notice.