

Cornerstone



Serial #: 1JSMEACV6R16W8055
Model: 45W CORNERSTONE MHA
VIN#: 4VZVU1R10RC094886
Model Year: 2024 Dealer Name: NATIONAL INDOOR RV CENTERS
1350 HURRICANE SHOALS ROAD
LAWRENCEVILLE, GA 30043
USA

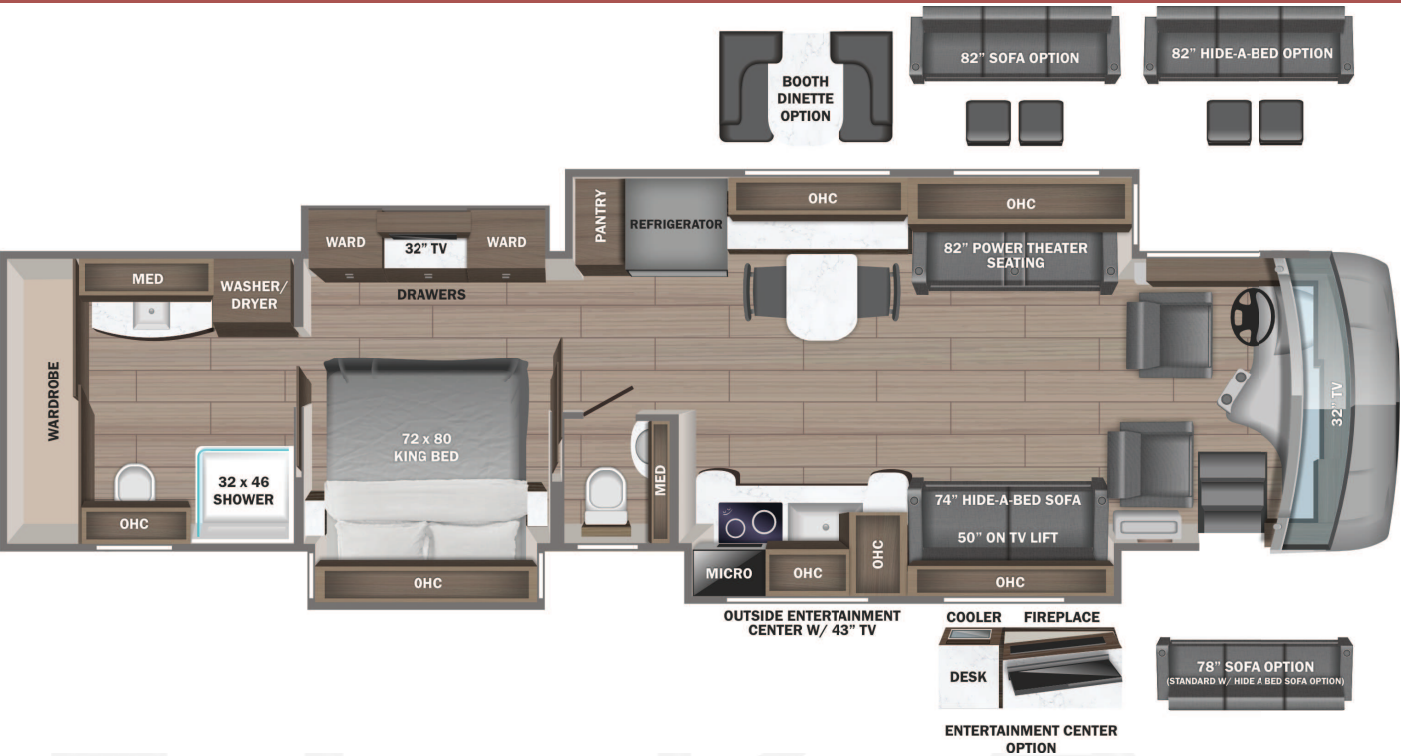
Standard Equipment

Optional Equipment

THE FOLLOWING ITEMS ARE STANDARD ON THIS MODEL AT NO EXTRA CHARGE		OPTIONAL EQUIPMENT INSTALLED ON THIS VEHICLE BY MANUFACTURER	
STANDARD EXTERIOR EQUIPMENT	STANDARD INTERIOR EQUIPMENT	Base price	925,980.00
- Spartan® K3 raised-rail chassis	- Valid™ 15 in. digital dash with quad core graphics processor, on-board diagnostics and ability to display traditional instrument cluster, 360° camera system or GPS navigation	LINEN	n/c
- Cummins® 15 liter X15 turbocharged 605 HP engine with 1,950 lb. ft. torque at 1,150 RPM	- Delta Mobile Systems® aiDARS™ 1X active 360° surround view system with 14 smart radar sensors and 6 HD cameras displayed on digital dash screen	STONEWALL GRAY CABINETRY	30.00
- Allison® 4,000 MH 6-speed transmission	- Valid™ infotainment system with 15 in. touchscreen, Sygic navigation, Bluetooth®, Sirius XM™ and AM/FM tuner, integrated camera control, house mode whole-coach audio distribution and integrated VegaTouch coach control	EXCLUDE LINEN FRONT	
- Three-stage engine brake	- 4.3 in. infotainment control touchscreen in passenger console	OVERHEAD ACCENT WOOD	n/c
- Collision avoidance system with collision warning, adaptive cruise control and electronic stability control	- E-Z Steer™ adjustable power steering assist	TACOMA SHADOW TILE	30.00
- Meritor® front axle with independent front suspension, integrated anti-sway bar and custom-tuned Koni® shocks- 20,000 lb. rating	- Leather steering wheel with integrated controls for screen selection, instrument cluster navigation, media source selection, cruise, wipers and Bluetooth® phone functionality	PATRIOT BLUE PAINT	30.00
- Dana® rear axle - 20,000 lb. rating	- Power tilt and telescoping steering column	USA STANDARDS	n/c
- Reyco® Granning® passive-steer tag axle with onee-touch manual air dump - 14,000 lb. rating	- JBL® premium audio 11-speaker sound system with amplifier, speakers and DVC subwoofer	24 SP 54000 320" X15 605	
- All-wheel ABS disc brakes	- All-in-one automotive antenna for AM/FM/Sirius/GPS dash radio system	TAG AXLE	
- Michelin® 365/70R 22.5 in. tires (front) and 315/80R 22.5 in. tires (rear)	- Ultra-Vision® one-piece wrap-around tinted windshield	2021EPA/2021CARB RA09	n/c
- Tire pressure monitoring system (TPMS) with temperature monitoring	- Rain-sensing windshield wipers	2 DRAWER CABINET ILO	
- Automatic traction control	- 32 in. Samsung® QLED 4K UHD Smart TV in front overhead	DISHWASHER	30.00
- Equalizer™ hydraulic automatic coach leveling	- Heated and cooled leather driver and passenger seats with powered 6-way adjustment, lumbar, recline, footrest and massage functions	12.5K GENERATOR	n/c
- Valid™ Truline air leveling system with auxiliary air compressor	- Powered driver's window	WINEGARD TRAV'LER	
- 20,000 lb. hitch with 7-pin plug	- Firefly multiplex system with 10 in. VegaTouch touchscreen for complete integration of coach controls, with remote monitoring and control (mobile app available)	SATELLITE ANTENNA W/DISH	
- Aqua-Hot® heated basement storage	- Spyder 3.5 in. touchscreen switches throughout	NETWORK	113.00
- Onan® 12,500W diesel generator, with automatic start, on powered slide-out tray	- 50 in. Samsung® QLED 4K UHD Smart TV	LITHIUM BATTERY	14,693.00
- 3,000W pure sine wave inverter	- Bose® sound bar with subwoofer and universal remote control	BOOTH DINETTE	1,643.00
- (4) L16 AGM batteries (6V/390 amp hrs. ea.)	- Sony® Blu-ray™ player	THEATER SEATING SOFA D/S	n/c
- (2) 200W solar panels	- Premium Italian leather Crown Compass furniture	SOFA WITH TV LIFT	n/c
- 50 amp power cord on electric powered reel	- Powered solar day and blackout night shades	SLEEPMADE GEL MEMORY	
- Bergstrom dual-zone HVAC system	- Central vacuum system	MATTRESS	30.00
- (3) 15,000 BTU A/C units with heat pumps and condensation drain system	- Stainless steel residential refrigerator	HEADBOARD,FRAME WITH	
- Aqua-Hot® 450D hydronic water and heating system with in-floor heat throughout and engine preheat	- Induction cooktop with matching wood cover	FABRIC INSERT	n/c
- Sani-Con® macerator holding tank dump system with power gate valves and manual backup	- 1.9 cu. ft. convection microwave oven		
- Water hose with electric reel	- Fisher & Paykel dishwasher		
- Dual roof-mounted Girard® Vision dual-pitched patio awnings with LED lights	- 32 in. Samsung® LED 4K UHD Smart TV		
- Girard® power entrance door awning with LED lights	- Bose® sound bar with universal remote control		
- Girard® Ultra slideout awnings	- Porcelain tile shower walls and floor with skylight and frameless glass shower door		
- Girard® Ultra power window awnings	- Teakwood shower seat		
- Lit grab handle with doorbell and keypad system for keyless entry	- Separate washer and dryer		
- 43 in. Samsung® QLED 4K UHD Smart TV with tilt, swivel, and extend adjustment			
- JBL® radio and speakers with USB port and receptacle			
- Chrome, heated, remote-control, side-view mirrors with blind-spot indicators			
- Automatic LED high and low beam headlights			
- Starlink satellite internet system			
- Winegard® TRAV'LER satellite dish DIRECTV® - standard with USA option			
- Winegard® Rayzar Automatic powered TV antenna			
- Winegard® WiFiRanger™ Wi-Fi extender			
- (2) power slideout basement storage trays			
- 2.8 cu. ft. exterior refrigerator/freezer on slideout tray			
- Push-button, power-unlatching baggage doors with LED indicator light			
		UNIT TOTAL	942,579.00
		DEALER INSTALLED OPTIONS	
		AGM BATTERY	n/c

Manufacturer's Suggested Retail Price \$942,579.00

TOTAL AMOUNT DOES NOT INCLUDE STATE AND LOCAL TAXES OR LICENSE FEES. THE PRICE SHOWN ABOVE MAY OR MAY NOT BE REPRESENTATIVE OF THE ACTUAL SELLING PRICE OF SIMILAR RECREATIONAL VEHICLES IN YOUR AREA.



DIMENSIONS

Exterior height:.....152.00"
Exterior width:.....101.00"

CAPACITIES

Fresh water tank (gals.):..100.00
Gray water tank (gals.):....62.00
Black water/toilet tank (gals.):.....41.00
Propane (lbs.):.....0
Propane (gals.):.....0
Water heater (gals.):.....0.00

TIRES

Tire size (front):.....365/70R22.5
Tire size (mid):.....315/80R22.5
Tire size (rear):.....315/80R22.5

Some dimensions may be rounded and may vary from the acutal dimensions
***Weights may be estimated calculations and may vary from the actual weight
- refer to the vehicle weight labels for actual weights***
Floorplans, features and specifications are subject to change without notice.