



# Cornerstone



Serial #: 1JSMEACV8S16R8051  
 Model: 45R CORNERSTONE MHA  
 VIN#: 4VZVU1R16SC095532  
 Model Year: 2025 Dealer Name: NATIONAL INDOOR RV CENTERS  
 1350 HURRICANE SHOALS ROAD  
 LAWRENCEVILLE, GA 30043  
 USA

**Manufacturer's Suggested Retail Price \$959,491.00**

TOTAL AMOUNT DOES NOT INCLUDE STATE AND LOCAL TAXES OR LICENSE FEES. THE PRICE SHOWN ABOVE MAY OR MAY NOT BE REPRESENTATIVE OF THE ACTUAL SELLING PRICE OF SIMILAR RECREATIONAL VEHICLES IN YOUR AREA.

## Standard Equipment

THE FOLLOWING ITEMS ARE STANDARD ON THIS MODEL AT NO EXTRA CHARGE

- STANDARD EXTERIOR EQUIPMENT**
- Spartan® K3 raised-rail chassis
  - Cummins® 15 liter X15 turbocharged 605 HP engine with 1,950 lb. ft. torque at 1,150 RPM
  - Allison® 4,000 MH 6-speed transmission
  - Three-stage engine brake
  - Collision avoidance system with collision warning, adaptive cruise control and electronic stability control
  - Meritor® front axle with independent front suspension, integrated anti-sway bar and custom-tuned Koni® shocks- 20,000 lb. rating
  - Dana® rear axle - 20,000 lb. rating
  - Reyco® Granning® passive-steer tag axle with one-touch manual air dump - 14,000 lb. rating
  - All-wheel ABS disc brakes
  - Michelin® 365/70R 22.5 in. tires (front) and 315/80R 22.5 in. tires (rear)
  - Tire pressure monitoring system (TPMS) with temperature monitoring
  - Automatic traction control
  - Equalizer™ hydraulic automatic coach leveling
  - Valid™ Truline air leveling system with auxiliary air compressor
  - 175 gal. fuel tank with dual fills
  - 15 gal. DEF tank with dual fills
  - 20,000 lb. hitch with 7-pin plug
  - Aqua-Hot® heated basement storage
  - Onan® 12,500W diesel generator, with automatic start, on powered slide-out tray
  - Victron 3,000W pure sine wave inverter with LED screen
  - (4) L16 AGM batteries (6V/390 amp hrs. ea.)
  - (2) 200W solar panels
  - 50 amp power cord on electric powered reel
  - Bergstrom dual-zone HVAC system
  - (3) 15,000 BTU A/C units with heat pumps and condensation drain system
  - Aqua-Hot® 600D hydronic water and heating system with in-floor heat throughout and engine preheat
  - Sani-Con® macerator holding tank dump system with power gate valves and manual backup
  - Hot and cold water hook-up in front cap area with 30 ft. quick-disconnect hose
  - Water softener prep in driver-side compartment
  - Water hose with electric reel
  - Dual roof-mounted Girard® Vision dual-pitched patio awnings with LED lights
  - Girard® power entrance door awning with LED lights
  - Girard® Ultra slideout awnings
  - Girard® Ultra power window awnings
  - Lit grab handle with doorbell and keypad system for keyless entry
  - 43 in. Samsung® QLED 4K UHD Smart TV with tilt, swivel, and extend adjustment
  - JBL® radio and speakers with USB port and receptacle
  - Blind-spot monitoring indicators in chrome, heated, remote-control side-view mirrors
  - Automatic LED high and low beam headlights
  - Starlink satellite internet system
  - Winegard® TRAV'LER satellite dish DIRECTV® - standard with USA option
  - Winegard® Rayzar Automatic powered TV antenna
  - Winegard® WiFiRanger™ Wi-Fi extender
  - (2) power slideout basement storage trays
  - 2.8 cu. ft. exterior refrigerator/freezer on slideout tray
  - Push-button, power-unlatching baggage doors with LED indicator light

- STANDARD INTERIOR EQUIPMENT**
- Valid™ 15 in. digital dash with quad core graphics processor, on-board diagnostics and ability to display traditional instrument cluster, 360° camera system or GPS navigation
  - Delta Mobile Systems® aiDARS™ 1X active 360° surround view system with 14 smart radar sensors and 6 HD cameras displayed on digital dash screen
  - Valid™ infotainment system with 15 in. touchscreen, Sygic navigation, Bluetooth®, Sirius XM™ and AM/FM tuner, integrated camera control, house mode whole-coach audio distribution and integrated VegaTouch coach control
  - 4.3 in. infotainment control touchscreen in passenger console
  - E-Z Steer™ adjustable power steering assist
  - Leather steering wheel with integrated controls for screen selection, instrument cluster navigation, media source selection, cruise, wipers and Bluetooth® phone functionality
  - Power tilt and telescoping steering column
  - JBL® premium audio 11-speaker sound system with amplifier, speakers and DVC subwoofer
  - All-in-one automotive antenna for AM/FM/Sirius/GPS dash radio system
  - Ultra-Vision® one-piece wrap-around tinted windshield
  - Rain-sensing windshield wipers
  - 32 in. Samsung® QLED 4K UHD Smart TV in front overhead
  - Heated and cooled leather driver and passenger seats with powered 6-way adjustment, lumbar, recline, footrest and massage functions
  - Powered driver's window
  - Firefly multiplex system with 10 in. VegaTouch touchscreen for complete integration of coach controls, with remote monitoring and control (mobile app available)
  - Spyder 3.5 in. touchscreen switches throughout
  - 50 in. Samsung® QLED 4K UHD Smart TV
  - Bose® sound bar with subwoofer and universal remote control
  - Sony® Blu-ray™ player
  - Premium Italian leather Crown Compass furniture
  - Powered solar day and blackout night shades
  - Portable Shark® vacuum cleaner
  - Stainless steel residential refrigerator
  - Induction cooktop with matching wood cover
  - 1.9 cu. ft. convection microwave oven
  - Fisher & Paykel dishwasher
  - 32 in. Samsung® LED 4K UHD Smart TV in bedroom
  - Bose® sound bar with universal remote control in bedroom
  - Porcelain tile shower walls and floor with skylight and frameless glass shower door
  - Thetford® macerator toilet in main bath
  - Thetford® macerator toilet in mid bath (45D, 45R, 45W)
  - Thetford® toilet in mid bath (45B)
  - Teakwood shower seat
  - Splendide stackable washer and dryer

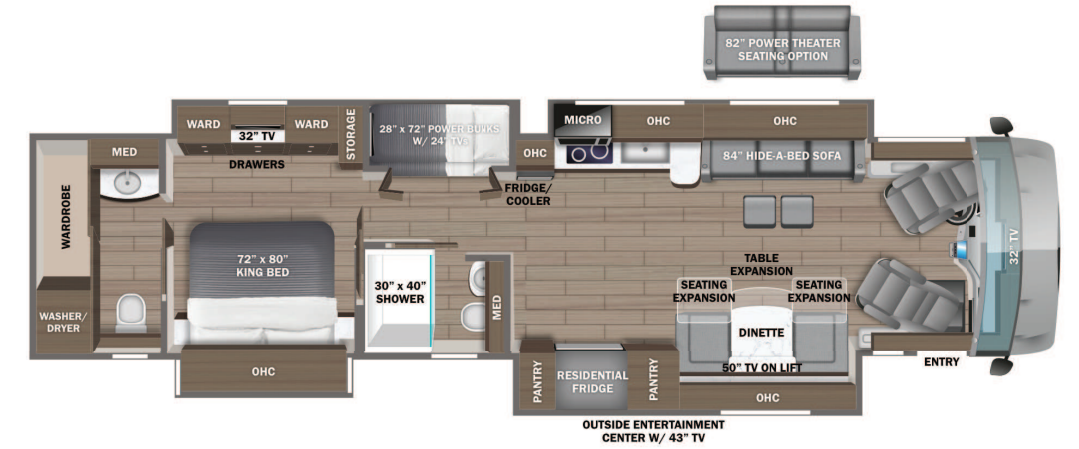
## Optional Equipment

OPTIONAL EQUIPMENT INSTALLED ON THIS VEHICLE BY MANUFACTURER

Base price	958,980.00
PROSECCO	n/c
DOVE WHITE CABINERY	30.00
DOVE WHITE FRONT	
OVERHEAD ACCENT WOOD	n/c
COASTLAND BALBOA TILE	30.00
COUNTERTOP	n/c
PATRIOT BLUE PAINT	30.00
USA STANDARDS	n/c
25 SP 54000 320" X15 605 TAG AXLE	
2021EPA/2021CARB SA09	n/c
DISHWASHER	n/c
12.5K GENERATOR	n/c
TRAV'LER DIRECT TV	
SATELLITE DISH	n/c
AGM BATTERY	n/c
HAB SOFA	n/c
KING INSTANT COMFORT MATTRESS	n/c
HEADBOARD, HARDWOOD	293.00
INS TACOMA SHADOW TILE, ANTHEM CHROME	
HDW, BIANCO HEADBOARD	128.00

UNIT TOTAL **959,491.00**

DEALER INSTALLED OPTIONS



## DIMENSIONS

Exterior height:.....152.00"  
 Exterior width:.....101.00"

## CAPACITIES

Fresh water tank (gals.):..100.00  
 Gray water tank (gals.):....62.00  
 Black water/toilet tank (gals.):.....41.00  
 Propane (lbs.):.....0  
 Propane (gals.):.....0  
 Water heater (gals.):.....0.00

## TIRES

Tire size (front):.....365/70R22.5  
 Tire size (mid):.....315/80R22.5  
 Tire size (rear):.....315/80R22.5

\*\*\*Some dimensions may be rounded and may vary from the actual dimensions\*\*\*

\*\*\*Weights may be estimated calculations and may vary from the actual weight

- refer to the vehicle weight labels for actual weights\*\*\*

Floorplans, features and specifications are subject to change without notice.