



ENTEGRA

COACH®

Vision



Serial #: 1J5MEABP2R1AS8091
 Model: 29S VISION MHA
 VIN#: 1F65FSDN6P0A08771
 Model Year: 2024 Dealer Name: NATIONAL INDOOR RV CENTERS
 4640 NEXUS WAY
 NORTH LAS VEGAS, NV 89115
 USA

Manufacturer's Suggested Retail Price \$193,435.00

TOTAL AMOUNT DOES NOT INCLUDE STATE AND LOCAL TAXES OR LICENSE FEES. THE PRICE SHOWN ABOVE MAY OR MAY NOT BE REPRESENTATIVE OF THE ACTUAL SELLING PRICE OF SIMILAR RECREATIONAL VEHICLES IN YOUR AREA.

Standard Equipment

THE FOLLOWING ITEMS ARE STANDARD ON THIS MODEL AT NO EXTRA CHARGE

STANDARD EXTERIOR EQUIPMENT

- Ford® F53 chassis
- GVW - 10,000 lb.
- 7.3L V6 351 HP engine with 48R II - 1b torque converter and low haul mode
- 6-speed automatic TorqShift® transmission with overdrive and low haul mode
- Cruise control
- 50 amp converter that delivers 12V power
- G-rated highway tires 245/70R19.5
- Front and rear disc, 4-wheel anti-lock brakes
- 2,000 lb. rear hitch receiver with dual connector and 12V chassis battery
- 80 gal. fuel tank
- FullShield™ vacuum bonded laminated roof, floor and bead-bam insulation (R-24 max roof, R-9 max floor, R-9 max walls)
- One-piece, seamless fiberglass front cap with fiberglass exterior walls with vinyl graphics
- Automatic hydraulic leveling jacks
- Frameness windows
- Full size door with industry's largest travel-view window
- Electric-powered entrance steps
- Lockable pass-through storage compartments with "Third Brake Light"
- 4-in. tube bumper with sewer hose storage
- Front ladder
- Cable TV receiver dish
- Winograd 2.0 W-F14G antenna
- Onan® Marquis Gold GenSet 5,500W generator
- 120V AC power with dual controller
- 50 amp electrical service
- 1.5 gal. propane tank (50 lb.)
- 12V gel battery
- Heated holding tanks (12V pads)
- Exterior utility center
- Ventilation dam system
- Outside shower
- 12V demand water pump
- Water filtration system

STANDARD INTERIOR EQUIPMENT

- 120 in. panoramic windshield
- Sewer driver and passenger seats
- Soft-lock vinyl-wrapped automotive dash
- Tilt steering wheel
- Cruise control
- Electric stability control
- Auxiliary start
- Power front privacy shade with manual side privacy shades
- LED interior lighting
- High-intensity recessed LED ceiling lights
- Hardwood cabinet doors and drawer fronts
- LED lit hardwood fascia
- 15,000 BTU A/C unit with heat pump and second 13,500 BTU A/C unit
- Auto-gignon ducted furnace - 30,000 BTU
- 12V AC power with 12V battery and 12V heater
- 2-point lap safety belts in all designated seating locations
- Car seat (leather select floorplans)
- Carbon monoxide detector
- Fire extinguisher
- 10 cu. ft. 12V refrigerator
- Residential-size microwave
- Large, recessed, stainless steel kitchen sink with cover
- LED lit recessed countertops (select models)
- Drop-down kitchen backwash
- Pop-up charging station in kitchen with 120V outlets and USB ports
- Walk-around, queen-size bed with bedspread and nightstand (select floorplans)
- USB port and wireless charging in nightstands
- Under-bed storage (select models)
- Bedroom TV prep
- Bunks with industry-exclusive 300 lb. capacity each (29F)
- Wall-mounted label holder in each bunk (29F)
- Shower with decorative surround glass door, skylight and recessed stainless steel bathroom sink
- Porcelain toilet with foot flush
- Powered roof vent in bathroom with wall switch

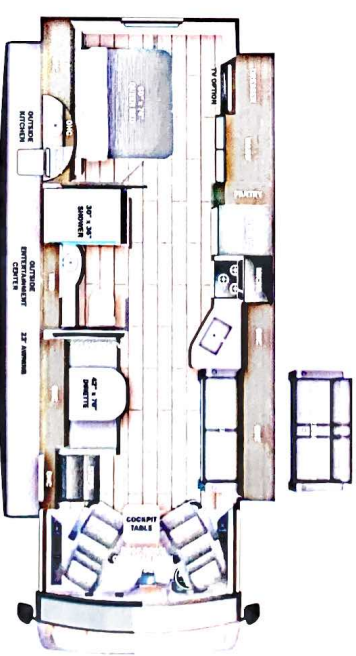
Optional Equipment

OPTIONAL EQUIPMENT INSTALLED ON THIS VEHICLE BY MANUFACTURER

Base price	179,168.00
MODERN FARMHOUSE PEWTER GRAPHS	443.00
USA STANDARDS	N/C
CUSTOMER VALUE PACKAGE	9,923.00
BEDROOM TV	383.00
THEATER SEATING SOFA	525.00
FRONT OVERHEAD BUNK	2,993.00

DEALER INSTALLED OPTIONS

UNIT TOTAL **193,435.00**



DIMENSIONS

Exterior height: 149.00*

Exterior width: 101.00*

CAPACITIES

Fresh water tank (gals.): 72.00

Gray water tank (gals.): 49.00

Black water/collet tank (gals): 50.00

Propane (lbs.): 56

Propane (gals.): 13

Water heater (gals.): 0.00

TIRES

Tire size (front): 245/70R19.5S

Tire size (mid): 245/70R19.5S

Tire size (rear): 245/70R19.5S

Some dimensions may be rounded and may vary from the actual dimensions
 Weights may be estimated calculations and may vary from the actual weight
 - refer to the vehicle weight labels for actual weights***
 Floorplans, features and specifications are subject to change without notice.