



Reatta XL



Serial #: 1JSMEABV1S1PC8052
 Model: 40Q2 REATTA XL MHA
 VIN#: 4VZAR1D11SC095526
 Model Year: 2025 Dealer Name: National Indoor RV Centers
 1000 Aubrey Dr.
 Lebanon, TN 37090
 USA

Manufacturer's Suggested Retail Price \$534,444.00

TOTAL AMOUNT DOES NOT INCLUDE STATE AND LOCAL TAXES OR LICENSE FEES. THE PRICE SHOWN ABOVE MAY OR MAY NOT BE REPRESENTATIVE OF THE ACTUAL SELLING PRICE OF SIMILAR RECREATIONAL VEHICLES IN YOUR AREA.

Standard Equipment

THE FOLLOWING ITEMS ARE STANDARD ON THIS MODEL AT NO EXTRA CHARGE

- STANDARD EXTERIOR EQUIPMENT**
- Spartan® K2 raised-rail chassis
 - Cummins® L9 turbocharged 380 HP engine with 1,150 lb.-ft. torque at 1,400 RPM
 - Allison® 3,000 MH 6-speed transmission
 - Rear-mounted radiator
 - 170 amp alternator
 - 1,000W engine block heater
 - Variable geometry turbo (VGT) engine brake
 - Independent front air suspension (IFS) front axle - 14,320 lb. rating
 - Rear axle - 22,000 lb. rating
 - 4.88 rear axle ratio
 - Michelin® 275/80R 22.5 in. tires
 - Bilstein® 46mm shocks
 - Wireless tire pressure monitoring system (TPMS) with temperature monitoring
 - Equalizer™ hydraulic automatic coach leveling
 - (2) 12V chassis batteries
 - 100 gal. fuel tank
 - 10 gal. DEF tank
 - Spartan® Safehaul tow vehicle air brake system
 - 10,000 lb. hitch with 7-pin plug
 - Roof: One-piece fiberglass with 3/8 in. plywood decking, 4 in. arched aluminum trusses, insulation and reflective Flexfoi® (R-24)
 - Sidewalls: Vacuum-bonded, high-gloss gelcoat with R-8 bead-foam insulation
 - Floors: Vacuum-bonded layers of Darco underbelly, a welded aluminum frame, R-9 bead-foam insulation, 3/8 in. Structurwood® and 1/4 in. plywood
 - X-Bridge™ bracing welded into chassis frame
 - Heated basement storage
 - Insulated front and rear caps (R-24)
 - Electric-powered slideout rooms
 - Onan® 10,000W diesel generator, with automatic start, on slide-out tray
 - 2,000W pure sine wave inverter with 100 amp battery charger
 - (2) L16 AGM batteries (6V/390 amp hrs. ea.)
 - 50 amp power cord on electric powered reel
 - Automatic transfer switch with surge protection
 - (2) 200W Go Power!® solar panels
 - (3) 15,000 BTU A/C units with heat pumps [(2) 15,000 BTU units with heat pumps on 37K]
 - Aqua-Hot® 250D hydronic water and heating system with 5 in. LED screen
 - Electric radiant floor heating system
 - Sani-Con® macerator holding tank dump system with manual gate valves and manual backup
 - Black tank flush
 - Grey tank flush
 - City and tank water filtration system
 - Hot and cold water hook-up in front cap area with 30 ft. quick-disconnect hose
 - Carefree® power patio awning with LED lights
 - Carefree® power entrance door awning with LED lights
 - Carefree® slideout awnings
 - Carefree® window awnings
 - Frameless, dual-pane, tinted, safety-glass windows
 - Grab handle and keypad system for keyless entry
 - 43 in. Samsung® 4K UHD Smart TV with tilt, swivel, and extend adjustment
 - JBL® radio and speakers with USB port and receptacle
 - LED accent lights under all slideout rooms
 - Heated, remote-control, side-view mirrors with integrated cameras
 - Diamond Shield™ front protective film mask

- STANDARD EXTERIOR EQUIPMENT (CONTINUED)**
- LED high and low beam headlights
 - Halogen fog lights
 - Automatic daytime running lights
 - LED marker lights, turn lights, license plate light, third brake light, accent lights and docking lights
 - Porch light
 - Mudflap with chrome "Entegra" nameplate
 - Winegard® TRAV'LER satellite dish DIRECTV® - standard with USA option
 - Winegard® TRAV'LER Pro satellite dish Shaw TV - standard with CSA option
 - Winegard Connect 2.0 Wi-Fi/4G antenna
 - Exterior utility center
 - Slideout basement storage tray
 - Sikkens custom full-body paint
- STANDARD INTERIOR EQUIPMENT**
- Valid™ 15 in. digital dash with quad core graphics processor, on-board diagnostics, selector knob and ability to display traditional instrument cluster, 360° camera system or GPS navigation
 - Xite™ 360° HD digital camera system
 - Xite™ XSG4 infotainment system with 9 in. touchscreen, iGO navigation, Bluetooth®, Sirius XM™ and AM/FM tuner, integrated camera control and house mode whole-coach audio distribution
 - Leather steering wheel with integrated controls for screen selection, instrument cluster navigation, media source selection, cruise, wipers and Bluetooth® phone functionality
 - Manual tilt and telescoping steering column
 - Ultra-Vision® one-piece wrap-around tinted windshield
 - Rain-sensing windshield wipers
 - 32 in. Samsung® LED 1080P Smart TV in front overhead
 - Leather driver and passenger seats with powered 6-way adjustment and power recline
 - Powered flush stepwell cover
 - Powered adjustable brake and accelerator pedals
 - Powered front sun visors and privacy shades
 - Firefly multiplex system with 10 in. VegaTouch touchscreen for complete integration of coach controls (mobile app available)
 - 50 in. Samsung® 4K UHD Smart TV
 - Samsung® sound bar with subwoofer
 - Sony® Blu-ray™ player
 - Premium leather furniture
 - Hand-laid, woodgrain porcelain tiled floors
 - LED interior lighting
 - Decorative ceiling feature with integrated accent lighting
 - Manual solar day shades and blackout night shades
 - Portable Shark® vacuum cleaner
 - Removable screen on entry door
 - Window with push out lever operation and screen
 - Stainless steel residential refrigerator
 - Induction cooktop
 - 1.5 cu. ft. convection microwave oven
 - Solid-surface countertops with stainless steel sink
 - Filtered water dispenser at kitchen sink
 - Maxxair® Deluxe power exhaust vent fan with intake in kitchen
 - Slide-out storage tray(s) in overhead cabinet
 - King-size pillow-top mattress on tilt bed
 - 32 in. Samsung® LED 1080P Smart TV in bedroom
 - Sony® Blu-ray™ player in bedroom
 - Bunks with industry-exclusive 300 lb. capacity each (39BH)
 - Solid-surface countertops with integrated sink
 - One-piece fiberglass shower with skylight
 - Aqua View SHOWERMISER™ water saving system
 - Thetford® Aqua Magic toilet with foot flush
 - Maxxair® Deluxe power exhaust vent fan with intake in bathroom
 - Splendide stackable washer and dryer
 - Carbon monoxide detector

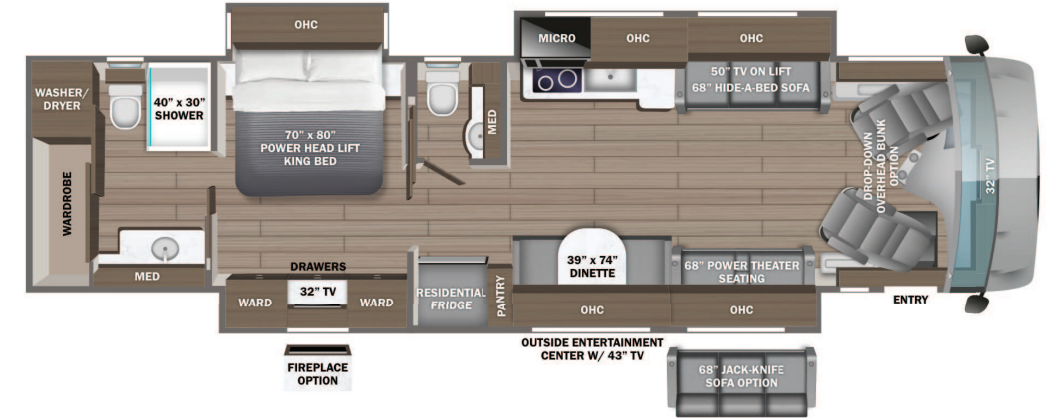
Optional Equipment

OPTIONAL EQUIPMENT INSTALLED ON THIS VEHICLE BY MANUFACTURER

Base price	510,893.00
GLACIER	n/c
ALMOND CABINETRY	30.00
EXCLUDE DOVE WHITE FRONT OVERHEAD ACCENT WOOD	n/c
TACOMA SHADOW TILE	30.00
RED MIST PAINT	30.00
USA STANDARDS	n/c
25 SP 36320 267" L9 380 ISL 2021EPA/2021CARB SA05	n/c
CUSTOMER VALUE PACKAGE	13,500.00
FIREPLACE	825.00
10K GENERATOR	n/c
TRAV'LER DIRECT TV	n/c
SATELLITE DISH	n/c
STARLINK SATELLITE INTERNET SERVICE	5,243.00
THEATER SEATING SOFA	n/c
FRONT OVERHEAD BUNK	3,893.00

UNIT TOTAL **534,444.00**

DEALER INSTALLED OPTIONS



DIMENSIONS

Exterior height:.....154.00"
 Exterior width:.....101.00"

CAPACITIES

Fresh water tank (gals.):..100.00
 Gray water tank (gals.):...62.00
 Black water/toilet tank (gals.):.....41.00
 Propane (lbs.):.....0
 Propane (gals.):.....0
 Water heater (gals.):.....0.00

TIRES

Tire size (front):.....275/80R 22.5
 Tire size (mid):.....
 Tire size (rear):.....275/80R 22.5

Some dimensions may be rounded and may vary from the actual dimensions

***Weights may be estimated calculations and may vary from the actual weight

- refer to the vehicle weight labels for actual weights***

Floorplans, features and specifications are subject to change without notice.