



ENTEGRA

COACH®

Vision XL

Serial #: 1J5MEABR051UL8053
 Model: 31UL VISION XL MHA
 VIN#: 1F66F5DNXR0A00034
 Model Year: 2025 Dealer Name: NATIONAL INDOOR RV CENTERS
 4640 NEXUS WAY
 NORTH LAS VEGAS, NV 89115
 USA



Standard Equipment

THE FOLLOWING ITEMS ARE STANDARD ON THIS MODEL AT NO EXTRA CHARGE

- STANDARD EXTERIOR EQUIPMENT**
- Ford® F53 chassis
 - GVWR - 22,000 lb. (34B, 34G) 24,000 lb. (36A, 36C)
 - GVWR - 26,000 lb. (34B, 34G), 30,000 lb. (36A, 36C)
 - 7.3L V-8 335 HP engine with 468 ft. lb. torque
 - 6-speed automatic Ford® 6R80 transmission with Overdrive
 - 210-amp alternator
 - Catalytic converter (heat deterrent)
 - Generator (1000 watts)
 - 24-gauge heavy duty tires - 235/80R22.5 (34B, 34G), 245/80R22.5 (36A, 36C)
 - Front and rear disc, 4-wheel anti-lock brakes
 - 5,000 lb. rear hitch receiver with dual connector and 7 pin plug
 - 80 gal. fuel tank
 - Turf® vacuum-bond laminated roof, floor and sidewalls
 - Seams insulation (R-24 max roof, R-9 max floor)
 - 8" x 8" (max) vinyl floor
 - One-piece, seamless fiberglass front cap with partial paint
 - One-piece, seamless fiberglass rear cap
 - Fiberglass exterior walls with vinyl graphics
 - Entrance door with industry's largest travel-view window
 - Lockable pass-through storage compartments with metal slat handles
 - LED headlights
 - LED interior lights
 - Flood ladder
 - Prep for satellite dish
 - Cable TV hookup with RG-6 coax
 - 200W solar panel with dual controller
 - (2) 8V AGM (220Ah) house batteries on slideout tray
 - Dryer/gas catch with reverse polarity protection
 - Dispersion pump
 - 15 gal. propane tank (56 lb.)
 - LP quick-connect hookup
 - Heated holding tanks (12V pads)
 - Fresh water pump
 - Winterization drain system
 - Black tank, flush
 - Outside shower
 - Water pump
 - Water filtration system
- STANDARD INTERIOR EQUIPMENT**
- 120 in. panoramic windshield
 - 6-way power and swivel driver/passenger seats
 - Soft touch, vinyl-wrapped automotive dash
 - Cruise control
 - Hill start assist
 - Electronic stability control
 - Auxiliary start
 - Power front privacy shade with manual side privacy shades
 - Fully multiplex system - wall-mounted touchscreen and 94 in. interior ceiling height with padded vinyl ceiling
 - High-intensity recessed LED ceiling lights
 - LED tail fascia
 - Ball-bearing overhead doors and drawer fronts
 - 30,000 BTU auto-ignition ducted furnace (34B, 34G, 36C)
 - (2) 30,000 BTU auto-ignition ducted furnaces (36A)
 - Electric fireplace (34B, 34G, 36C)
 - Electric hot water heater
 - 2-point lap safety belts in all designated seating locations
 - Gas seat leathers (select floorplans)
 - JBL® audio system
 - Carbon monoxide detector
 - Fire extinguisher
 - Residential refrigerator
 - Residential microwave
 - Residential-size oven
 - Walk-around, long-size bed with bedspread and USB port and wireless charging in nightstands
 - Under-bed storage (select models)
 - LED HD Smart TV in bedroom
 - Bunk with industry-exclusive, 300 lb. capacity each (36A)
 - Wall-mounted label holder in each bunk (36A)
 - Shower with decorative surround, glass door, skylight and light
 - Processed stainless steel bathroom sink
 - Porcelain toilet with roof flush
 - Powered roof vent in bathroom with wall switch

Optional Equipment

OPTIONAL EQUIPMENT INSTALLED ON THIS VEHICLE BY MANUFACTURER

Base price	204,743.00
PAINTHOUSE	443.00
LOG BLOCK GRAPHICS	N/G
USA STANDARDS PACKAGE	N/G
FIBERGLASS REAR CAP	11,250.00
POWER THEATER SEATING	N/G
FRONT OVERHEAD BUNK	2,018.00
	3,293.00

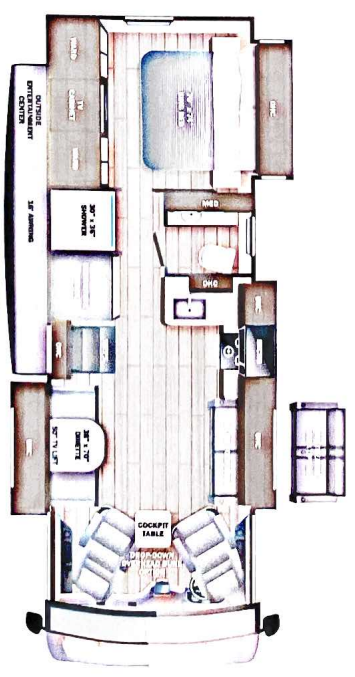
UNIT TOTAL **221,747.00**

DEALER INSTALLED OPTIONS:

- 80-amp electrical service
- 10 gal. electric water heater
- 10 gal. gel battery vent heater
- 32 gal. gel battery vent heater
- Apple CarPlay® and Android Auto™
- Backup and side-view cameras
- Removable dinette/passenger cockpit table
- Removable dinette/passenger cockpit table
- Stainless steel sink and sink covers
- LED HD Smart TV in living area
- Integrated day/night cassette shades

Manufacturer's Suggested Retail Price \$221,747.00

TOTAL AMOUNT DOES NOT INCLUDE STATE AND LOCAL TAXES OR LICENSE FEES. THE PRICE SHOWN ABOVE MAY OR MAY NOT BE REPRESENTATIVE OF THE ACTUAL SELLING PRICE OF SIMILAR RECREATIONAL VEHICLES IN YOUR AREA.



DIMENSIONS

Exterior height:.....154.00" Fresh water tank (gals.):.....72.00
 Exterior width:.....101.00" Gray water tank (gals.):.....40.00

CAPACITIES

Black water/toilet tank (gals.):.....50.00
 Propane (lbs.):.....56
 Propane (gals.):.....13
 Water heater (gals.):.....10.00

TIRES

Tire size (front):.....235 80R22.5G
 Tire size (mid):.....
 Tire size (rear):.....235 80R22.5G

Some dimensions may be rounded and may vary from the actual dimensions
 Weights may be estimated calculations and may vary from the actual weights
 - refer to the vehicle weight labels for actual weights***
 Floorplans, features and specifications are subject to change without notice.