



ENTEGRA

COACH®

Esteem XL

Serial #: 1J5LECB57S12U8051
 Model: 32U ESTEEM XL MHC
 VIN#: 1FDUF5HT9RDA00317
 Model Year: 2025 Dealer Name: NATIONAL INDOOR RV CENTERS
 4640 NEXUS WAY
 NORTH LAS VEGAS, NV 89115
 USA



Standard Equipment

THE FOLLOWING ITEMS ARE STANDARD ON THIS MODEL AT NO EXTRA CHARGE

- STANDARD EXTERIOR EQUIPMENT**
- Ford® F550 4x4 chassis
 - GVWR - 19,500 lb.
 - GVWR - 31,500 lb.
 - 6.7L Power Stroke V8 Turbo diesel engine with block heater - 350 HP at 2,200 RPM and 950 ft. lb. torque at 1,800 RPM
 - 332-amp alternator
 - G-rated tires - 225/70R19.5
 - Steel wheels with matte black liners
 - 12,000 lb. rear hitch receiver
 - 7-pin plug
 - Ford® AdvanceTrac® with HSC® (roll stability control) and trailer sway control
 - Integrated trailer brake controller
 - Single chassis battery (750 CCA 78 AH)
 - Dual fuel tanks (2x 5 gal. and 40 gal.)
 - T-Top®™ vacuum-bond laminated roof, floor and sidewalls
 - Bend-foam insulation (R-24 max roof, R-9 max floor, R.5 max walls)
 - One-piece seamless, fiberglass roof
 - Fiberglass exterior walls with partial paint and vinyl graphics
 - Entrance door with industry's largest travel-view window
 - Electric-powered entrance step with integrated hydraulic component
 - Sideout® 30
 - Exterior LED HD Smart TV with (2) high-output, marine-grade exterior speakers
 - Lockable storage compartments with slam latches
 - Third brake light
 - Floor ladder
 - Prep for satellite dish
 - Cable TV hookup with RG-6 coax
 - (2) 8V AGM house batteries
 - (2) 8V AGM house batteries
 - 50-amp shore power
 - Detachable power cord
 - 16.5 gal. propane tank (56 lb.)
 - LP quick-connect hookup
 - Heated holding tanks (12V paas)
 - Exterior utility center
 - Mineralization drain system
 - Black tank flush
 - Outside shower
 - 12V demand water pump
 - Water filtration system

Optional Equipment

OPTIONAL EQUIPMENT INSTALLED ON THIS VEHICLE BY MANUFACTURER

- STANDARD INTERIOR EQUIPMENT**
- Ford SYNC® 4 infotainment center with Apple® CarPlay™ and Android Auto™
 - Audible lane departure warning
 - Pre-Collision Assist® with automatic emergency braking (AEB)
 - SOS Post-Crash Alert System™
 - 30S® and Passenger Airbags
 - Side-impact door beams
 - Remote keyless entry and perimeter anti-theft alarm
 - Security® anti-theft ignition
 - Quad dual-beam halogen headlights
 - Ramlamp wiper activated headlights
 - Remote start
 - Adjustable gas/brake pedals
 - Cruise control
 - Power windows and door locks
 - Auxiliary start switch
 - Battery power inlet seat
 - Custom-installed ABS surround in cab-over-area
 - Overhead bunk with 750 lb. capacity and safety net
 - Privacy curtain for cab area
 - 84 in. interior ceiling height with padded vinyl ceiling
 - High-intensity recessed LED ceiling lights
 - LED-ill. fascia
 - Hardwood cabinet doors and drawer fronts
 - Deluxe hidden cabinet hinges
 - Ball-bearing drawer guides
 - Blackout night roller shades
 - 10.000 BTU gas/electric heater
 - 10.000 BTU gas/electric water heater
 - JBL® audio system
 - Emergency-exit, easy-operation legless dinette table
 - 2-point lap safety belts in all designated seating locations
 - Car seat leathers (select floorplans)
 - 10 cu. ft. 12V refrigerator
 - Furrion® all-in-one cooktop and oven
 - Recreased stainless steel kitchen sink with sink covers
 - Solid-surface kitchen countertops
 - Recreased stainless steel kitchen backsplash
 - Pecton™ kitchen backsplash
 - 200-watt charging station in kitchen with 120V outlets and USB ports
 - Walk-around, king-size bed with bedspread and nightstands
 - Large wardrobes
 - USB port and wireless charging in nightstands
 - Shower with decorative surround, glass door, skylight and light
 - Recreased stainless steel bathroom sink
 - Toilet with foot flush
 - Covered floor vent in bathroom with wall switch
 - Carbon monoxide detector
 - Fire extinguisher

Base price	266,550.00
ABOVE SILVER PARTIAL PAINT	n/c
USA STANDARDS	n/c
CHASSIS STANDARD - F550	25,493.00
CUSTOMER VALUE PACKAGE	413.00
BEDROOM TV	1,193.00
DUAL A/C'S	n/c
10 CU. FT. 12V REFRIGERATOR	n/c
STEEL RIMS	n/c
FOLDING WINDSHIELD SUN SHADE	488.00
THEATER SEATING SOFA	2,093.00

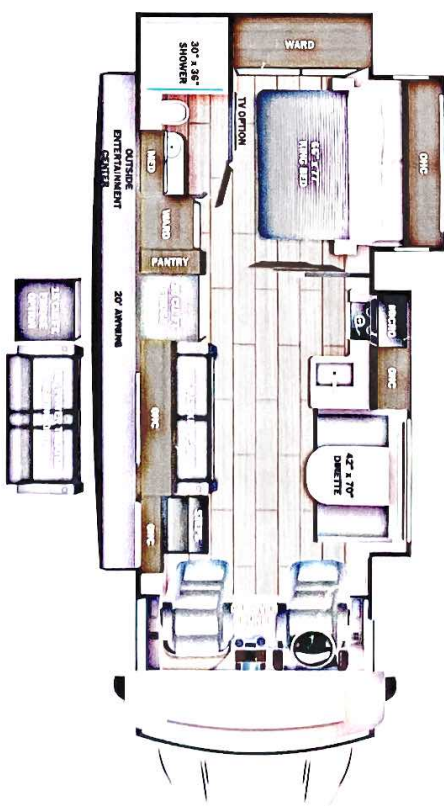
UNIT TOTAL

296,230.00

DEALER INSTALLED OPTIONS

Manufacturer's Suggested Retail Price \$296,230.00

TOTAL AMOUNT DOES NOT INCLUDE STATE AND LOCAL TAXES OR LICENSE FEES. THE PRICE SHOWN ABOVE MAY OR MAY NOT BE REPRESENTATIVE OF THE ACTUAL SELLING PRICE OF SIMILAR RECREATIONAL VEHICLES IN YOUR AREA.



DIMENSIONS

Exterior height: 144.00*
 Exterior width: 101.00*

CAPACITIES

Fresh water tank (gals.): 42.50
 Gray water tank (gals.): 31.00
 Black water/toilet tank (gals.): 31.00
 Propane (lbs.): 83
 Propane (gals.): 19
 Water heater (gals.): 10.00

TIRES

Tire size (front): 225/70R19.5G
 Tire size (mid):
 Tire size (rear): 225/70R19.5G

Some dimensions may be rounded and may vary from the actual dimensions
 Weights may be estimated calculations and may vary from the actual weight
 - refer to the vehicle weight labels for actual weights***
 Floorplans, features and specifications are subject to change without notice.