

STL 12057



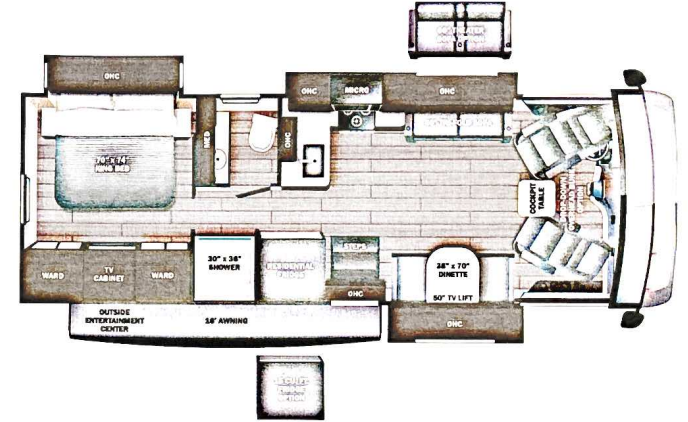
Precept



Serial #: 1UJMJABR3S1UL4068
 Model: 31UL PRECEPT MHA
 VIN#: 1F66F5DN6R0A01164
 Model Year: 2025 Dealer Name: NATIONAL INDOOR RV CENTERS
 11280 N SOLAR CANYON WAY
 SURPRISE, AZ 85379
 USA

Manufacturer's Suggested Retail Price \$218,822.00

TOTAL AMOUNT DOES NOT INCLUDE STATE AND LOCAL TAXES OR LICENSE FEES. THE PRICE SHOWN ABOVE MAY OR MAY NOT BE REPRESENTATIVE OF THE ACTUAL SELLING PRICE OF SIMILAR RECREATIONAL VEHICLES IN YOUR AREA.



Standard Equipment

THE FOLLOWING ITEMS ARE STANDARD ON THIS MODEL AT NO EXTRA CHARGE

- STANDARD EXTERIOR EQUIPMENT**
- Ford® F53 chassis
 - GVWR: 22,000 lb. (31UL, 34B, 34G) 24,000 lb. (36A, 36C)
 - GCWR: 26,000 lb. (31UL, 34B, 34G), 30,000 lb. (36A, 36C)
 - 7.3L V-8 335 HP engine with 468 ft.-lb. torque
 - 6-speed automatic TorqShift® transmission with overdrive and tow haul mode
 - 210-amp alternator
 - Catalytic converter I/elt deterrent
 - G-rated highway tires: 235/80R22.5 (31UL, 34B, 34G), 255/80R22.5 (36A, 36C)
 - Front and rear disc, 4-wheel anti-lock brakes
 - 5,000 lb. rear hitch receiver with dual connector and 7-pin plug
 - 12V chassis battery
 - 80 gal. fuel tank
 - 120 in. panoramic windshield
 - Stronghold® BEL™ roof, floor and sidewalls
 - Bead-foam insulation (R-24 max roof, R-9 max floor, R-8 max walls)
 - One-piece, seamless fiberglass front cap with partial paint
 - One-piece, seamless fiberglass rear cap
 - One-piece, seamless, crowned fiberglass roof
 - Fiberglass exterior walls with vinyl graphics
 - Entrance door with industry's largest travel-view window
 - Electric-powered entrance steps
 - Lockable, pass-through storage compartments with metal slam latches
 - LED headlights
 - Third brake light
 - Roof ladder
 - Prep for satellite dish
 - Cable TV hookup with RG-6 coax and video selector switch
 - Winegard 2.0 Wi-Fi/4G antenna
 - 200W solar panel with dual controller
 - (2) 6V AGM (220Ah) house batteries on slideout tray
 - Transfer switch with reverse polarity protection
 - Detachable power cord
 - 16.5 gal. propane tank (56 lb.)
 - LP quick-connect hookup
 - Heated holding tanks (12V pads)
 - Exterior utility center
 - Wintenzation drain system
 - Black tank flush
 - Outside shower
 - 12V demand water pump
 - Water filtration system

- STANDARD INTERIOR EQUIPMENT**
- 6-way power and swivel driver/passenger seats
 - Soft-touch, vinyl-wrapped automotive dash
 - Tilt steering wheel
 - Cruise control
 - Hill start assist
 - Electronic stability control
 - Traction control
 - Auxiliary start
 - Power front privacy shade with manual side privacy shades
 - Firefly total coach control system with wall-mounted touchscreen and mobile app
 - 84 in. interior ceiling height with padded vinyl ceiling
 - High-intensity recessed LED ceiling lights
 - LED-lit fascia
 - Hardwood cabinet doors and drawer fronts
 - Ball-bearing drawer guides
 - Jayco-exclusive, easy-operation legless dinette table
 - 2-point lap safety belts in all designated seating locations
 - Car seat belts (select floorplans)
 - JBL® audio system
 - 30,000 BTU auto-ignition ducted furnace (31UL, 34B, 34G, 36C)
 - (2) 30,000 BTU auto-ignition ducted furnaces (36A)
 - Electric fireplace (34B, 34G, 36C)
 - Residential refrigerator
 - Furmor® all-in-one cooktop and oven
 - Residential-size microwave
 - Decorative kitchen backsplash
 - Shower with decorative surround, glass door, skylight and light
 - Stainless steel bathroom sink
 - Porcelain toilet with foot flush
 - Powered roof vent in bathroom with wall switch
 - Walk-around, king-size bed with bedspread and nightstands
 - USB port and wireless charging in nightstands
 - LED HD Smart TV in bedroom
 - Under-bed storage (select models)
 - Large wardrobes
 - Bunks with industry-exclusive 300 lb. capacity each (36A)
 - Wall-mounted tablet holder in each bunk (36A)
 - Smoke alarm
 - Carbon monoxide detector
 - Fire extinguisher

- CUSTOMER VALUE PACKAGE**
- J-Ride® Plus: Computer-balanced driveshaft, Bilstein® steering stabilizer, Konig® shocks, variable-rate front and rear jounce bumpers, heavy-duty front and rear stabilizer bars, 22.5 in. Michelin® tires
 - Automatic hydraulic leveling jacks
 - Lippert™ 4000 series frameless bonded windows
 - 15,000 BTU A/C unit with heat pump and second 13,500 BTU A/C unit
 - Exterior entertainment center with outside speakers and LED HD Smart TV mounted on swivel bracket
 - Electric patio awning with LED lights
 - Slideout awning(s)
 - 5,500W generator with auto-gen start
 - 1,200W inverter
 - 50-amp electrical service
 - 10 gal. gas/electric water heater
 - Sony® infotainment center with Apple® CarPlay™ and Android Auto™
 - Backup and side-view cameras
 - Removable driver/passenger cockpit table
 - LED-lit, solid-surface kitchen countertops with recessed stainless steel sink and sink covers
 - LED HD Smart TV in living area
 - Integrated day/night cassette shades

Optional Equipment

OPTIONAL EQUIPMENT INSTALLED ON THIS VEHICLE BY MANUFACTURER

- Base price 201,818.00
- FARMHOUSE 443.00
- ALLOY BLOCK GRAPHICS PACKAGE n/c
- USA STANDARDS n/c
- CUSTOMER VALUE PACKAGE 11,250.00
- RESIDENTIAL REFRIGERATOR n/c
- FIBERGLASS REAR CAP n/c
- POWER THEATER SEATING SOFA 2,018.00
- FRONT OVERHEAD BUNK 3,293.00

UNIT TOTAL 218,822.00

DEALER INSTALLED OPTIONS

DIMENSIONS

Exterior height:.....154.00"
 Exterior width:.....101.00"

CAPACITIES

Fresh water tank (gals.).....72.00
 Gray water tank (gals.).....40.00
 Black water/toilet tank (gals.).....50.00
 Propane (lbs.).....56
 Propane (gals.).....13
 Water heater (gals.).....10.00

TIRES

Tire size (front):.....235/80R22.5G
 Tire size (mid):.....
 Tire size (rear):.....235/80R22.5G

Some dimensions may be rounded and may vary from the actual dimensions
 Weights may be estimated calculations and may vary from the actual weight - refer to the vehicle weight labels for actual weights
 Floorplans, features and specifications are subject to change without notice.

