

STK 12060



Redhawk SE



Serial #: 1UJLJCL6S1G24100
 Model: 22CF REDHAWK SE MHC
 VIN#: 1FDWE3FN0SDD19177
 Model Year: 2025 Dealer Name: NATIONAL INDOOR RV CENTERS
 11280 N SOLAR CANYON WAY
 SURPRISE, AZ 85379
 USA

Manufacturer's Suggested Retail Price \$134,004.00

TOTAL AMOUNT DOES NOT INCLUDE STATE AND LOCAL TAXES OR LICENSE FEES. THE PRICE SHOWN ABOVE MAY OR MAY NOT BE REPRESENTATIVE OF THE ACTUAL SELLING PRICE OF SIMILAR RECREATIONAL VEHICLES IN YOUR AREA.

Standard Equipment

Optional Equipment

THE FOLLOWING ITEMS ARE STANDARD ON THIS MODEL AT NO EXTRA CHARGE

OPTIONAL EQUIPMENT INSTALLED ON THIS VEHICLE BY MANUFACTURER

- STANDARD EXTERIOR EQUIPMENT**
- Ford® E-350 chassis
 - GVWR - 12,500 lb.
 - GCWR - 18,500
 - 7.3L V-8 325 HP engine with 450 ft.-lb. torque
 - 6-speed TorqShift® series transmission with overdrive
 - 210-amp alternator
 - 5,000 lb. hitch with 500 lb. tongue capacity and 7-pin plug
 - 55 gal. fuel tank
 - Tire pressure monitoring system (TPMS)
 - Catalytic converter theft deterrent
 - Electronic stability control
 - Traction control
 - E-rated highway tires- LT225/75R16
 - 12V chassis battery
 - Power anti-lock brakes with power steering
 - Remote-controlled, side-view mirrors
 - Stronghold/VBL™ roof, floor and sidewalls
 - Bead-foam insulation (R-24 max roof, R-9 max floor, R-5 max walls)
 - Tufflex™ PVC laminated roof
 - Aluminum running boards
 - Fiberglass exterior walls with vinyl graphics
 - Entrance door with industry's largest travel-view window
 - Electric-powered entrance step with integrated house battery compartment
 - Third brake light
 - 4 in. bumper tube sewer hose storage
 - Cable TV hookup with RG-6 coax
 - Digital antenna with signal booster
 - 4,000W generator
 - Solar prep
 - 12V house battery
 - Transfer switch with reverse polarity protection
 - 30-amp electrical service
 - 12.2 gal. propane tank (41 lb.)
 - LP quick-connect hookup
 - Exterior utility center
 - Winterization drain system
 - Outside shower
 - 12V demand water pump
 - Water filtration system

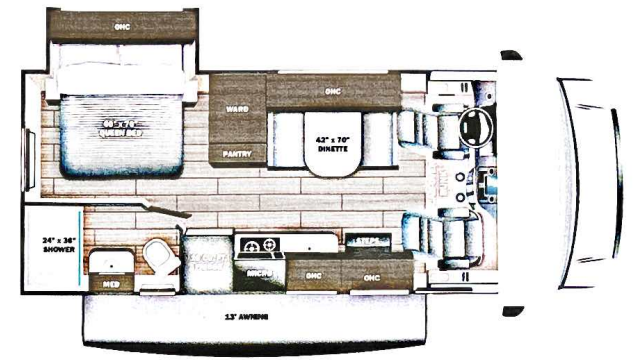
- STANDARD INTERIOR EQUIPMENT**
- Hill start assist
 - Tilt steering wheel
 - Cruise control
 - Power windows and door locks
 - Auxiliary start switch
 - Driver and passenger airbags
 - Privacy curtain for cab area
 - Overhead bunk with 750 lb. capacity
 - 84 in. ceiling height
 - High-intensity, recessed LED ceiling lights
 - Hardwood cabinet doors
 - Ball-bearing drawer guides
 - Interior entrance door grab handle
 - Interior command center
 - Pleated blackout shades
 - 13,500 BTU ducted A/C
 - 30,000 BTU auto-ignition furnace
 - 6 gal. gas/electric DSI auto-ignition water heater
 - 42 in. x 78 in. U-shaped dinette (22AF)
 - Jayco-exclusive, easy-operation legless dinette table (22CF)
 - 38 in. x 48 in. dinette lounge (22TF)
 - 2-point lap safety belts in all designated seating locations
 - 10 cu. ft. 12V refrigerator
 - 2-burner cooktop with flush cover
 - Convection microwave oven
 - Stainless steel kitchen sink
 - Decorative kitchen backsplash
 - Shower with decorative ABS surround and skylight
 - Stainless steel bathroom sink
 - Toilet with foot flush
 - Queen-size bed with bedspread (22AF, 22CF)
 - (2) twin-size beds with filler cushion convert to king-size bed (22TF)
 - Large wardrobes (select models)
 - Smoke alarm
 - Carbon monoxide detector
 - Fire extinguisher

Base price	123,218.00
ASHBROOK	n/c
USA STANDARDS	n/c
25 FD E35 12500 158*	
7.3L WHITE SC11	n/c
CUSTOMER VALUE PACKAGE	6,000.00
HYDRAULIC AUTO LEVELING JACKS	3,893.00
200W ROOF MOUNTED SOLAR PANEL W/2ND HOUSE BATTERY	893.00
STANDARD HOUSE BATTERY	n/c

- CUSTOMER VALUE PACKAGE**
- One-piece, seamless, fiberglass front cap
 - Heated holding tanks (12V pads)
 - Electric patio awning
 - Black holding tank sprayer
 - Backup camera
 - LED HD Smart TV

UNIT TOTAL **134,004.00**

DEALER INSTALLED OPTIONS



DIMENSIONS

Exterior height:.....138.00"
 Exterior width:.....100.00"

CAPACITIES

Fresh water tank (gals.):...43.50
 Gray water tank (gals.):...40.00
 Black water/toilet tank (gals.):...31.00
 Propane (lbs.):...41
 Propane (gals.):...9
 Water heater (gals.):...6.00

TIRES

Tire size (front):.....LT225/75R16E
 Tire size (mid):.....
 Tire size (rear):.....LT225/75R16E

Some dimensions may be rounded and may vary from the actual dimensions
 ***Weights may be estimated calculations and may vary from the actual weight
 - refer to the vehicle weight labels for actual weights***
 Floorplans, features and specifications are subject to change without notice.

