



ENTEGRA
COACH®

Vision XL



Serial #: 1JSMEABU5M1UA8078
Model: 36A VISION XL MHA
VIN#: 1F66F5DN3L0A13215
Model Year: 2021 Dealer Name: National Indoor Rv Centers
1205 Bridgestone Parkway
La Vergne, TN 37086
USA

Manufacturer's Suggested Retail Price \$173,754.00

TOTAL AMOUNT DOES NOT INCLUDE STATE AND LOCAL TAXES OR LICENSE FEES. THE PRICE SHOWN ABOVE MAY OR MAY NOT BE REPRESENTATIVE OF THE ACTUAL SELLING PRICE OF SIMILAR RECREATIONAL VEHICLES IN YOUR AREA.

Standard Equipment

THE FOLLOWING ITEMS ARE STANDARD ON THIS MODEL AT NO EXTRA CHARGE

- Exterior
 - Ford® F53 chassis
 - 7.3L V-8 350 HP engine with 468 ft.-lb. torque
 - 6-speed automatic, TorqShift™ transmission with overdrive and tow haul mode
 - 210-amp alternator
 - G-rated highway tires- 235/80R22.5 (34B, 34G), 295/60R22.5 (66A)
 - Front and rear disc, 4-wheel anti-lock brakes
 - 5,000 lb. rear hitch receiver with dual connector with 7-pin plug
 - 12V chassis battery
 - 80 gal. fuel tank
 - 120 in. panoramic windshield
 - TuffShell™ vacuum bond laminated roof, floor and sidewalls
 - Seals foam insulation (R-24 max roof, R-9 max floor, R-8 max walls)
 - One-piece, seamless, fiberglass front and rear caps
 - One-piece, seamless, crowned fiberglass roof
 - Fiberglass exterior walls with vinyl graphics
 - Entrance door with industry's largest travel view window
 - Electric-powered entrance step
 - Third brake light
 - Lockable pass-through storage compartments with slim lockers
 - (2) 6V AGM (220Ah) house batteries on slideout tray
 - 16.5 gal. propane tank (56 lb.)
 - Solar prep
 - Heated holding tanks (12V pads)
 - LP quick-connect hookup
 - Exterior utility center
 - Winterization drain system
 - Black tank flush
 - Outside shower
 - Flush light
 - Roof Ladder
- Interior
 - Power front privacy shade with manual side privacy shades
 - 6-way power and swivel driver and passenger seats
 - Soft-touch, vinyl wrapped automotive dash
 - A/C and cruise control
 - Tilt steering wheel
 - Auxiliary start
 - 64 in. interior ceiling height with padded vinyl ceiling
 - Ball-bearing driver's guides
 - Hardwood cabinet doors and drawers
 - Auto-ignition ducted furnace-35,000-BTU (34B, 34G), (2)20,000 BTU (66A)
 - Furrion® electric fireplace (34B, 34G only)
 - 21 cu. ft. residential refrigerator with ice and water in door
 - Furrion® all-in-one cooktop and oven
 - Residential sized microwave
 - Powered roof vent in kitchen with wall switch
 - Decorative kitchen backsplash
 - 12V demand water pump
 - Digital antenna with signal booster
 - Water filtration system
 - Entegri® exclusive easy operation legless dinette table
 - 2-point lap safety belts in all designated seating locations
 - High-intensity, recessed LED ceiling lights
 - Blu-Ray™ player in living area
 - Cable TV hookup with RG-6 coax and video selector switch
 - Prep for satellite dish
 - Recessed stainless steel bathroom sink
 - Porcelain toilet with foot flush
 - Shower with decorative surround, glass door, skylight and light
 - Powered roof vent in bathroom with wall switch
 - Walk-around king-sized bed with bestspread and nightstands
 - Under bed storage (select models)
 - Large wardrobes
 - LED TV in bedroom
 - Bunks with industry-exclusive 300 lb. capacity each (36A)
 - Smoke alarm
 - Carbon monoxide detector
- Customer Value Package
 - EZDRIVE™ Computer-balanced driveshaft, Jounce bumpers, heavy-duty front and rear stabilizer bars, SACHS shocks
 - Sony® infotainment center with Apple CarPlay® and Android Auto™
 - Automatic hydraulic leveling jacks
 - Backup and sideview cameras
 - Framless windows
 - Onan® Marquis Gold Genset 5,500-watt generator with auto-gen start
 - 1,200-watt inverter
 - 50-amp electrical service
 - Electric patio awning with LED lights
 - Slideout cover awnings
 - Exterior entertainment center with outside speakers, LED TV mounted on swivel bracket and single-disc DVD/RFM radio
 - LED living room TV
 - LED lit solid surface kitchen countertops with recessed stainless steel sink and sink covers
 - Removable driver/passenger cockpit table
 - Day/night roller shades
 - 15,000 BTU A/C unit with heat pump and second 13,500 BTU A/C unit

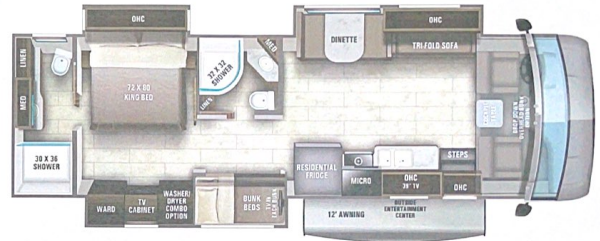
Optional Equipment

OPTIONAL EQUIPMENT INSTALLED ON THIS VEHICLE BY MANUFACTURER

Base price	159,068.00
Modern Farmhouse	443.00
Ocean Spray Graphics	n/c
USA Standards	n/c
Customer Value Package	11,250.00
Residential Refrigerator	n/c
Front Bunk Overhead Sofa	2,993.00
	n/c

UNIT TOTAL **173,754.00**

DEALER INSTALLED OPTIONS



DIMENSIONS

Exterior height:.....154.00"
Exterior width:.....101.00"

CAPACITIES

Fresh water tank (gals.)....72.00
Gray water/toilet tank (gals.).....80.00
Black water/toilet tank (gals.).....102.00
Propane (lbs.).....56
Propane (gals.).....13
Water heater (gals.).....10.00

TIRES

Tire size (front):.....255/80R22.5G
Tire size (mid):.....
Tire size (rear):.....255/80R22.5G

Some dimensions may be rounded and may vary from the actual dimensions
***Weights may be estimated calculations and may vary from the actual weight
- refer to the vehicle weight labels for actual weights***
Floorplans, features and specifications are subject to change without notice.