



Greyhawk

5357



Serial #: 1UJLJCBN3M1MU4283
 Model: 27U GREYHAWK MHC
 VIN#: 1FDXE4FN2NDC02599
 Model Year: 2021 Dealer Name: NATIONAL INDOOR RV CENTERS
 11280 N SOLAR CONYON WAY
 SURPRISE, AZ 85379
 USA

Standard Equipment

Optional Equipment

THE FOLLOWING ITEMS ARE STANDARD ON THIS MODEL AT NO EXTRA CHARGE

OPTIONAL EQUIPMENT INSTALLED ON THIS VEHICLE BY MANUFACTURER

- Exterior**
- Ford® E-450 chassis
 - 7.3L V-8 350 HP engine with 468 ft.-lb. torque
 - 6-speed TorqShift® series transmission with overdrive
 - 210-amp alternator
 - E-rated highway tires- LT225/75R16
 - Power anti-lock brakes with power steering
 - 7,500 lb. hitch with 750 lb. tongue capacity and 7-pin plug
 - 12V chassis battery
 - 55 gal. fuel tank
 - Chrome, heated, remote-controlled, sideview mirrors
 - Stronghold® VBL™ Vacuum-Bond laminated roof, floor and sidewalls
 - Dead-foam insulation (R-24 max roof, R-9 max floor, R-5 max walls)
 - Fiberglass exterior with vinyl graphics
 - One-piece seamless fiberglass front cap
 - Fiberglass running boards and transition wings
 - Fiberglass, radius-cornered entrance door with large window
 - One-piece, seamless, crowned fiberglass roof
 - Remote keyless entry
 - Entrance door with industry's largest travel view window
 - Electric-powered entrance step with integrated house battery compartment
 - 12V house battery
 - Slideout cover awnings
 - (2) high-output, marine-grade exterior speakers
 - Lockable storage compartments with slam latches
 - Onan® 4,000-watt MicroQuiet™ generator with auto-changeover
 - 30-amp electrical service
 - 16.5 gal. propane tank (56 lb.)
 - LP quick-connect hookup
 - Heated holding tanks (12V pads)
 - 4 in. bumper-tube with sewer hose storage
 - Exterior utility center
 - Winterization drain system
 - Black tank flush
 - Outside shower
 - Roof ladder (n/a 30Z)
 - 6 gal. gas/electric DSI auto-ignition water heater
 - Solar prep
 - Flush-mount LED marker lights
 - Third brake light
 - Porch light

- Interior**
- Swivel driver and passenger seats (N/A 30X)
 - Tire pressure monitoring system (TPMS)
 - Driver and passenger air bags
 - Power windows and door locks
 - Tilt steering wheel
 - A/C and cruise control
 - Auxiliary start switch
 - Privacy curtains for cab area
 - 84 in. interior ceiling height with padded vinyl ceiling
 - High-intensity, recessed LED ceiling lights
 - LED lit hardwood fascia
 - Hardwood cabinet doors and drawers
 - Ball-bearing drawer guides
 - 8 cu. ft., flush-mount, double door refrigerator
 - Residential-sized microwave
 - Furrion® all-in-one cooktop and oven
 - Integrated stainless steel kitchen sink with cutting board and grate sink cover
 - LED-lit pressed countertops
 - Flip-up countertop extension (select models)
 - Decorative kitchen backsplash
 - Pop-up charging station with 110 outlet and USB plugs
 - 12V demand water pump
 - Water filtration system
 - Jayco-exclusive easy operation legless dinette table
 - 2-point lap safety belts in all designated seating locations
 - Interior command center
 - 31,000 BTU auto-ignition furnace
 - Cable TV hookup with RG-6 coax
 - Digital antenna with signal booster
 - Prep for satellite dish
 - Shower with decorative surround, glass door, skylight and light
 - Toilet with foot flush
 - Stainless steel bathroom sink
 - Powered roof vent in bathroom with wall switch
 - Walk-around Queen-sized bed with bedspread and nightstands
 - Under-bed storage (select models)
 - Overhead bunk with 750 lb. capacity
 - Bunks with industry-exclusive 300 lb. capacity each (31F)
 - Smoke alarm
 - Carbon monoxide detector

- Customer Value Package**
- JRIDE® PLUS: Computer-balanced driveshaft, Konig® FSD shocks, heavy-duty rear stabilizer bar, standard front stabilizer bar, Heliwig® helper springs, rubber isolation mounts
 - Automatic hydraulic leveling jacks
 - Sony® infotainment center Apple CarPlay® and Android Auto™
 - Backup and sideview cameras
 - Frameless windows
 - Electric patio awning with LED lights
 - 1,000-watt inverter
 - 15,000 BTU A/C with heat pump
 - LED TV in bedroom
 - LED HDTV in living area

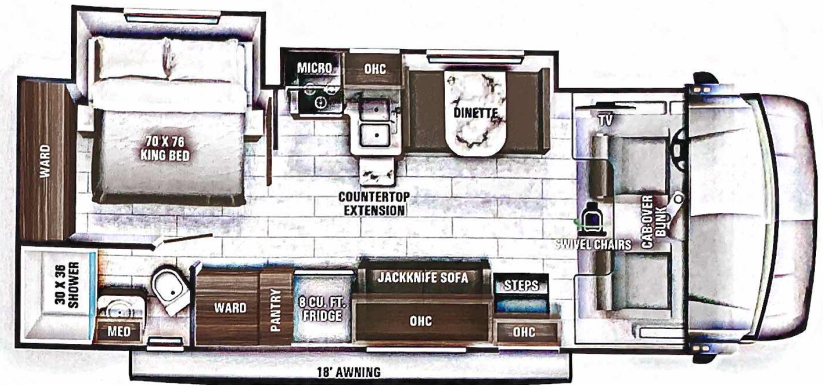
Base price	122,618.00
Huntington	n/c
Tire pressure monitoring system (TPMS)	10,493.00
Galactic Paint Package	n/c
USA Standards	n/c
Customer Value Package	9,000.00
11,000 BTU AC (2)	1,193.00
8 Cu. Ft. Refrigerator	n/c
Steel Rims	n/c
Standard House Battery	n/c
Theater Seating Sofa	375.00
Cabover Bunk with TV	n/c

UNIT TOTAL 143,679.00

DEALER INSTALLED OPTIONS

Manufacturer's Suggested Retail Price \$143,679.00

TOTAL AMOUNT DOES NOT INCLUDE STATE AND LOCAL TAXES OR LICENSE FEES. THE PRICE SHOWN ABOVE MAY OR MAY NOT BE REPRESENTATIVE OF THE ACTUAL SELLING PRICE OF SIMILAR RECREATIONAL VEHICLES IN YOUR AREA.



DIMENSIONS

Exterior height:.....140.00"
 Exterior width:.....100.00"

CAPACITIES

Fresh water tank (gals.).....42.50
 Gray water tank (gals.).....41.00
 Black water/toilet tank (gals.).....31.00
 Propane (lbs.).....56
 Propane (gals.).....13
 Water heater (gals.).....6.00

TIRES

Tire size (front):.....LT225/75R16E
 Tire size (mid):.....
 Tire size (rear):.....LT225/75R16E

Some dimensions may be rounded and may vary from the actual dimensions
 Weights may be estimated calculations and may vary from the actual weight - refer to the vehicle weight labels for actual weights
 Floorplans, features and specifications are subject to change without notice.

