



ENTEGRA

COACH®

Esteeem

Serial #: 1JSLECBN6N1BU8122
 Model: 27U ESTEEM MHC
 VIN#: 1FDXE4FN3NDDC40973
 Model Year: 2022 Dealer Name: NATIONAL INDOOR RV CENTERS
 4640 NEXUS WAY
 NORTH LAS VEGAS, NV 89115
 USA



Standard Equipment

THE FOLLOWING ITEMS ARE STANDARD ON THIS MODEL AT NO EXTRA CHARGE

- EXTERIOR**
 - Ford® E-450 chassis
 - GVWR - 14,500 lb.
 - GCWR - 22,000 lb.
 - 7.3L V-8 350 HP engine with 468 ft.-lb. torque
 - 6-speed TorqShift® series transmission with overdrive
 - 210-amp alternator
 - E-rated highway tires - LT225/75R16
 - 7-spoke anti-lock brakes with power steering
 - 7,500-lb. hitch with 750-lb. tongue capacity and 12V class battery
 - 55-gal. fuel tank
 - Onan® 4,000-watt MicroQuiet™ generator with auto-changover
 - Transfer switch with reverse polarity protection
 - 30-amp electrical service
 - 190W solar panel with dual controller and second house battery
 - Heated holding tanks (12V pads)
 - 15-gal. AC with heat pump
 - 30,000 BTU
 - 6-gal. gas/electric PSI auto-switch water heater
 - 16.5-gal. propane tank (56 lb.)
 - LP quick-connect hookup
 - Exterior utility center
 - Winterization drain system
 - Black tank flush
 - Outside shower
 - 12V demand water pump
 - Water filtration system
 - 1.1L/Striell™ vacuum-bond laminated roof, floor and structural beam insulation (R-24 max roof, R-9 max floor, R-5 max walls)
 - One-piece, seamless, fiberglass roof
 - Fiberglass turning boards
 - Fiberglass side wings
 - Fiberglass exterior walls with vinyl graphics
 - Entrance door with industry's largest travel-view window
 - Electric-powered entrance step with integrated house battery compartment
 - Slideout cover awnings
 - Lockable storage compartments with slam latches
 - Roof ladder
 - Thru brake light
- INTERIOR**
 - Remote keyless cab entry
 - Sewer driver and passenger seats with boosters (N/A 30X)
 - Tire pressure monitoring system (TPMS)
 - Power windows and door locks
 - AC and cruise control
 - Tilt steering wheel
 - Auxiliary start switch
 - Privacy curtains for cab area
 - Custom-molded ABS surround in cab-over-area
 - Overhead bunk with 750 lb. capacity and safety net
 - 8-in. interior ceiling height with padded vinyl ceiling
 - LED-illuminated LED ceiling lights
 - Hardwood cabinet doors and drawers
 - Ball-bearing drawer guides
 - Blacout night roller shades
 - Interior command center
 - Emergra-exclusive, easy-operation legless dinette table
 - LED HD Smart Fire TV in living area
 - Prep for satellite dish
 - Cable TV hookup with RG-6 coax
 - Wireguard 2.0 WiFi/4G antenna
 - 8-outlet gas/electric refrigerator
 - 12-gal. stainless-steel cooking and oven
 - Residential-size microwave
 - Recessed stainless steel kitchen sink with solid-surface covers
 - Flip-up countertop extension (select models)
 - Decorative kitchen backsplash
 - Pop-up charging station in kitchen with 110 outlets and USB ports
 - Shower with decorative surround, glass door, skylight and light
 - Recessed stainless steel bathroom sink
 - Porcelain toilet with toilet flusher with wall switch
 - Recessed stainless steel bedroom with bedspread and nightstands (King size in 27U)
 - Under-bed storage (select models)
 - Powered roof vent in bedroom with wall switch
 - Large wardrobes
 - Bunks with industry-exclusive 300-lb. capacity each (31F)
 - 2-point lap safety belts in all designated seating locations
 - Driver and passenger airbags
 - Smoke alarm
 - Carbon monoxide detector

Optional Equipment

OPTIONAL EQUIPMENT INSTALLED ON THIS VEHICLE BY MANUFACTURER

- Remote keyless cab entry
- Sewer driver and passenger seats with boosters (N/A 30X)
- Tire pressure monitoring system (TPMS)
- Power windows and door locks
- AC and cruise control
- Tilt steering wheel
- Auxiliary start switch
- Privacy curtains for cab area
- Custom-molded ABS surround in cab-over-area
- Overhead bunk with 750 lb. capacity and safety net
- 8-in. interior ceiling height with padded vinyl ceiling
- LED-illuminated LED ceiling lights
- Hardwood cabinet doors and drawers
- Ball-bearing drawer guides
- Blacout night roller shades
- Interior command center
- Emergra-exclusive, easy-operation legless dinette table
- LED HD Smart Fire TV in living area
- Prep for satellite dish
- Cable TV hookup with RG-6 coax
- Wireguard 2.0 WiFi/4G antenna
- 8-outlet gas/electric refrigerator
- 12-gal. stainless-steel cooking and oven
- Residential-size microwave
- Recessed stainless steel kitchen sink with solid-surface covers
- Flip-up countertop extension (select models)
- Decorative kitchen backsplash
- Pop-up charging station in kitchen with 110 outlets and USB ports
- Shower with decorative surround, glass door, skylight and light
- Recessed stainless steel bathroom sink
- Porcelain toilet with toilet flusher with wall switch
- Recessed stainless steel bedroom with bedspread and nightstands (King size in 27U)
- Under-bed storage (select models)
- Powered roof vent in bedroom with wall switch
- Large wardrobes
- Bunks with industry-exclusive 300-lb. capacity each (31F)
- 2-point lap safety belts in all designated seating locations
- Driver and passenger airbags
- Smoke alarm
- Carbon monoxide detector

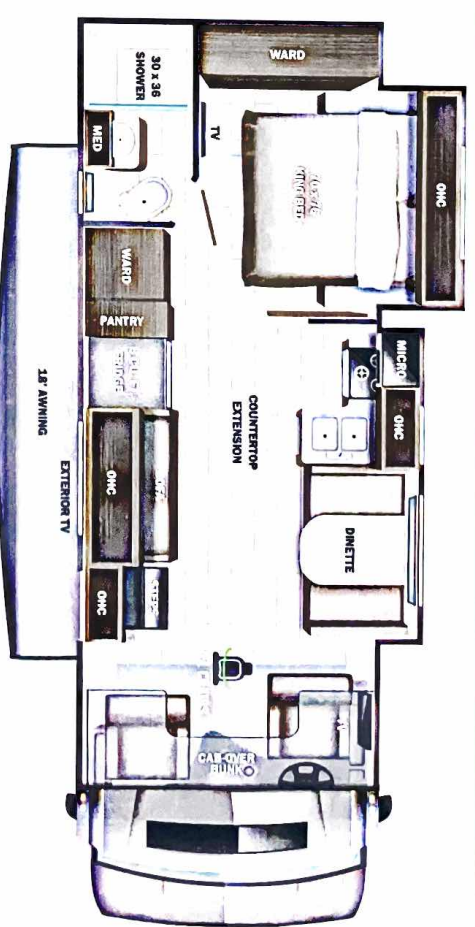
Base price	153,293.00
Brighton	N/C
Sandpiper Full Body Paint	8,243.00
USA Standards	N/C
22' FD E45 14500 158"	N/C
7.3L WHITE NC10	N/C
Customer Value Package	9,000.00
Dual A/Cs	1,193.00
12 Cu. Ft. Refrigerator	2,843.00
Aluminum Rims	2,393.00
Standard House Battery	N/C
Sun Folding Windshield	N/C
Shade	443.00

UNIT TOTAL **177,408.00**

DEALER INSTALLED OPTIONS

Manufacturer's Suggested Retail Price \$177,408.00

TOTAL AMOUNT DOES NOT INCLUDE STATE AND LOCAL TAXES OR LICENSE FEES. THE PRICE SHOWN ABOVE MAY OR MAY NOT BE REPRESENTATIVE OF THE ACTUAL SELLING PRICE OF SIMILAR RECREATIONAL VEHICLES IN YOUR AREA.



DIMENSIONS
 Exterior height:.....140.00"
 Exterior width:.....100.00"

CAPACITIES
 Fresh water tank (gals.):.....42.50
 Gray water tank (gals.):.....41.00
 Black water/toilet tank (gals.):.....31.00
 Propane (lbs.):.....56
 Propane (gals.):.....13
 Water heater (gals.):.....0.00

TIRES
 Tire size (front):.....LT225/75R16E
 Tire size (mid):.....LT225/75R16E
 Tire size (rear):.....LT225/75R16E

Some dimensions may be rounded and may vary from the actual dimensions
 ****Weights may be estimated calculations and may vary from the actual weight
 - refer to the vehicle weight labels for actual weights***
 Floorplans, features and specifications are subject to change without notice.