



Alante



Serial #: 1UJMABN7N1AU4210
 Model: 27A ALANTE MHA
 VIN#: 1F65F5DN4N0A01542
 Model Year: 2022 Dealer Name: NATIONAL INDOOR RV CENTERS
 11280 N SOLAR CANYON WAY
 SURPRISE, AZ 85379
 USA

Standard Equipment

THE FOLLOWING ITEMS ARE STANDARD ON THIS MODEL AT NO EXTRA CHARGE

- EXTERIOR**
- Ford® F53 chassis
 - GVWR- 16,000 lb. (26X), 18,000 lb. (27U, 31V, 29S, 29F)
 - GCWR- 23,000 lb
 - 7.3L V-8 350 HP engine with 468 ft.-lb. torque
 - 6-speed automatic TorqShift® transmission with overdrive and low haul mode
 - 210-amp alternator
 - G-rated highway tires-245/70R19.5
 - Front and rear disc, 4-wheel anti-lock brakes
 - 5,000 lb. rear hitch receiver with dual connector and 7-pin plug
 - 12V chassis battery
 - 80 gal. fuel tank
 - 120 in. panoramic windshield
 - StrongholdVEL™ roof, floor and sidewalls
 - Bead-foam insulation (R-24 max roof, R-9 max floor, R-5 max walls)
 - One-piece, seamless, fiberglass front cap
 - Fiberglass exterior walls with vinyl graphics
 - Automatic hydraulic leveling jacks
 - Frameless windows
 - Entrance door with industry's largest travel-view window
 - Electric-powered entrance step
 - Lockable, pass-through storage compartments with slam latches
 - Heated holding tanks (12V pads)
 - 16.5 gal. propane tank (56 lb.)
 - LP quick-connect hookup
 - Exterior utility center
 - Winterization drain system
 - Outside shower
 - 12V demand water pump
 - Onan® Marquis Gold genset 4,000-watt generator
 - Transfer switch with reverse polarity protection
 - 30-amp electrical service
 - 190W solar panel with dual controller and second house battery
 - Flush-mount LED marker lights
 - Third brake light
 - 4 in. tube bumper with sewer hose storage

- INTERIOR**
- Swivel driver and passenger seats
 - 6-way power passenger seat
 - Soft touch, vinyl-wrapped automotive dash
 - Tilt steering wheel
 - A/C and cruise control
 - Power front privacy shade with manual side privacy shades
 - 84 in. interior ceiling height
 - High-intensity, recessed LED ceiling lights
 - LED-lit, hardwood fascia
 - Hardwood cabinet doors and drawers
 - Ball-bearing drawer guides
 - Jayco-exclusive, easy-operation legless dinette table
 - 2-point lap safety belts in all designated seating locations
 - Dual A/C units with power management system [(1)15,000 on 26X]
 - 30,000 BTU auto-ignition ducted furnace
 - Girard® tankless water heater
 - Prep for satellite dish
 - Cable TV hookup with RG-6 coax and video selector switch
 - Winegard 2.0 WiFi4G antenna
 - 8 cu. ft. flush-mount, double-door refrigerator
 - Furrion® all-in-one cooktop and oven
 - Residential-size microwave
 - Large stainless steel kitchen sink with cover
 - LED-lit, pressed countertops
 - Flip-up countertop extension (select models)
 - Decorative kitchen backsplash
 - Pop-up charging station in kitchen with 110 outlets and USB ports
 - Water filtration system
 - Shower with decorative surround, glass door, skylight and light
 - Stainless steel bathroom sink
 - Porcelain toilet with foot flush
 - Powered roof vent in bathroom with wall switch
 - Walk-around Queen-size bed with bedspread and nightstands (King-size in 27A)
 - Under-bed storage (select models)
 - Powered roof vent in bedroom with wall switch (26X)
 - Large wardrobes
 - Bunks with industry-exclusive 300 lb. capacity each (29F)
 - Smoke alarm
 - Carbon monoxide detector

- CUSTOMER VALUE PACKAGE**
- JRIIDE® Computer-balanced driveshaft, jounce bumpers, heavy-duty front and rear stabilizer bars, SACHS shocks
 - One-piece, seamless, crowned fiberglass roof
 - Exterior entertainment center with outside speakers, LED TV mounted on swivel bracket and single-disc DVD/PM radio
 - Electric patio awning with LED lights
 - Slideout cover awnings
 - 1,000-watt inverter
 - Sony® infotainment center with Apple® CarPlay™ and Android Auto™
 - Backup and side-view cameras
 - Removable driver/passenger cockpit table
 - LED HD Smart Fire TV in living area
 - Blackout night roller shades

Optional Equipment

OPTIONAL EQUIPMENT INSTALLED ON THIS VEHICLE BY MANUFACTURER

Base price	163,418.00
Modern Farmhouse USA Standards	443.00
Customer Value Package	n/c
22 FD F53 18000 190"	9,923.00
7.3L ND02 Bedroom TV	n/c
8 Cu. Ft. Refrigerator	383.00
Standard House Battery	n/c
Front Overhead Bunk	2,243.00

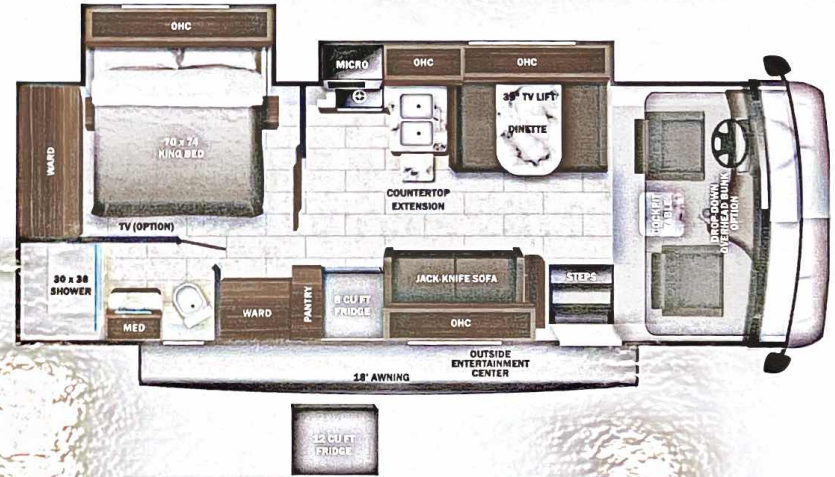
UNIT TOTAL **176,410.00**

DEALER INSTALLED OPTIONS

Manufacturer's Suggested Retail Price

\$176,410.00

TOTAL AMOUNT DOES NOT INCLUDE STATE AND LOCAL TAXES OR LICENSE FEES. THE PRICE SHOWN ABOVE MAY OR MAY NOT BE REPRESENTATIVE OF THE ACTUAL SELLING PRICE OF SIMILAR RECREATIONAL VEHICLES IN YOUR AREA.



DIMENSIONS

Exterior height:.....149.00"
 Exterior width:.....101.00"

CAPACITIES

Fresh water tank (gals.):.....72.00
 Gray water tank (gals.):.....50.00
 Black water/toilet tank (gals.):.....49.00
 Propane (lbs.):.....56
 Propane (gals.):.....13
 Water heater (gals.):.....0.00

TIRES

Tire size (front):.....245/70R19.5G
 Tire size (mid):.....
 Tire size (rear):.....245/70R19.5G

Some dimensions may be rounded and may vary from the actual dimensions
 Weights may be estimated calculations and may vary from the actual weight - refer to the vehicle weight labels for actual weights
 Floorplans, features and specifications are subject to change without notice.

