



**ENTEGR A**  
COACH®

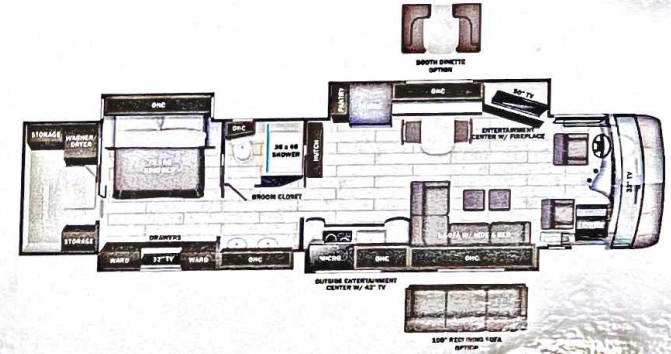
### Aspire



Serial #: 1JSMEACV7N13Z8067  
 Model: 44Z ASPIRE MHA  
 VIN#: 4VZAU1D9XNC091967  
 Model Year: 2022 Dealer Name: NATIONAL INDOOR RV CENTERS  
 11280 N SOLAR CANYON WAY  
 SURPRISE, AZ 85379  
 USA

### Manufacturer's Suggested Retail Price \$583,201.00

TOTAL AMOUNT DOES NOT INCLUDE STATE AND LOCAL TAXES OR LICENSE FEES. THE PRICE SHOWN ABOVE MAY OR MAY NOT BE REPRESENTATIVE OF THE ACTUAL SELLING PRICE OF SIMILAR RECREATIONAL VEHICLES IN YOUR AREA.



#### Standard Equipment

THE FOLLOWING ITEMS ARE STANDARD ON THIS MODEL AT NO EXTRA CHARGE

- EXTERIOR**
- Spartan® K2 raised-rail chassis
  - Cummins® L9 turbocharged 450 HP engine with 1,250-lb. ft. torque at 1,400 RPM
  - Allison® 3,000 MH 6-speed transmission
  - Side-mounted parallel-airflow radiator
  - Reyco® Granning® front axle with independent front suspension - 17,000 lb. rating
  - Meritor rear axle - 20,000 lb. rating (Dana® rear axle - 24,000 lb. rating on 40P)
  - Tag axle with air dump - 12,000 lb. rating (N/A 40P)
  - Bilstein® 46mm shocks
  - Equalizer™ hydraulic automatic coach leveling
  - Roof: 4' arched aluminum trusses filled with batt insulation and reflective Flexfoam® topped with 3/8" plywood decking then one-piece fiberglass
  - Sidewalls: 2-1/2" exterior walls with Alumina-Tri™ welded tubular aluminum studs on 16" centers or less, filled with batt and Flexfoam® insulation, then covered with high-gloss gelcoat fiberglass (R-16)
  - Floors: 2" x 4" wood trusses on 16" centers or less filled with batt and Flexfoam® insulation then topped with 3/4" 7-ply plywood decking (R-33)
  - X-Bridge™ bracing welded into chassis frame
  - Aqua-Hot® heated basement storage
  - Insulated front and rear caps (R-24)
  - Entegra-exclusive Relia-Torque flush-mounted 12V slideout system
  - Onan® 10,000-watt diesel generator, with automatic start, on slide-out tray
  - 3,000-watt pure sine wave inverter
  - (2) 116 AGM batteries (6V/350 amp hrs. ea.)
  - 50-amp power cord on electric powered reel
  - Smart automatic transfer switch with surge protection
  - (3) 15,000-BTU A/C units with heat pumps and condensation drain system
  - Aqua-Hot® 400D hydronic water and heating system with in-floor heat throughout
  - Sam-Con® Macerator holding tank dump system with manual gate valves, manual backup and metal door
  - Black holding tank sprayer
  - City and tank water filtration system
  - Winterizing drain system
  - TruTank™ ultrasonic tank monitoring system displayed on VegaTouch screen
  - Water hose with electric reel
  - Power rear engine door with manual override
  - Dual roof-mounted Girard® Vision dual-pitched patio awnings with LED lights
  - Girard® power entrance door awning with LED lights
  - Girard® Ultra slideout awnings
  - Girard® window awnings
  - Frameless, dual-pane, tinted, safety-glass windows
  - Li grab handle with doorbell and keypad system for keyless entry
  - 43" Samsung® 4K UHD Smart TV with tilt, swivel, and extend adjustment
  - JBL radio and speakers with USB port and receptacle
  - Chrome, heated, remote-control, side-view mirrors with integrated cameras
  - Diamond Shield™ front protective film mask
  - LED accent lights under passenger slideout rooms
  - Winegard® TRAVLER satellite dish DIRECTV® - standard with Aqua option
  - Winegard® Rayzar Z1 TV antenna
  - Winegard® WiFi extender with 4G/LTE
  - Heated exterior utility center with 5" LED Firefly® tank monitoring panel
  - Slideout basement storage tray

- INTERIOR**
- Valid 12.3" digital dash with quad core graphics processor, on-board diagnostics, selector knob and ability to display traditional instrument cluster, 360° camera system or GPS navigation
  - Xite™ 360° HD digital camera system
  - Xite™ XSG4 infotainment system with 9" touchscreen, iGO navigation, Bluetooth®, Sirius XM™ and AM/FM tuner, integrated camera control and house mode whole-coach audio distribution
  - Tire pressure monitoring system (TPMS) with temperature monitoring
  - E-Z Steer™ adjustable power steering assist
  - Steering wheel with integrated controls for cruise, wipers, radio and Bluetooth® phone functionality
  - Manual tilt and telescoping steering column
  - JBL® premium audio 5-speaker sound system with amplifier, speakers and DVC subwoofer
  - Ultra-Vision® one-piece wrap-around tinted windshield
  - 32" Samsung® LED 1080P Smart TV in front overhead
  - Vite® leather driver and passenger seats with powered 6-way adjustment, lumbar and footrest functions
  - Powered flush stepwell cover
  - Powered adjustable brake and accelerator pedals
  - Powered front sun visors and privacy shades
  - (2) dual USB ports and (2) 12V sockets for charging
  - Firefly multiplex system with 10" Vega Touch touchscreen for complete integration of coach controls (mobile app available)
  - 50" Samsung® 4K UHD Smart TV
  - Bose® sound bar with subwoofer and universal remote control
  - Sony® Blu-ray™ player
  - Premium leather Vite® furniture
  - Hand-laid porcelain tiled floors
  - LED interior lighting
  - Manual solar day shades and blackout night shades
  - Central vacuum system
  - Aire-Secure™ travel locks for all pocket doors
  - Removable screen on entry door
  - Bar area with beverage chiller and rain glass upper cabinet door with LED accent lighting (44R only)
  - Window with slider and screen
  - Whirlpool® stainless-steel residential refrigerator with ice maker and water dispenser
  - Induction cooktop with matching wood cover
  - Whirlpool® 1.9-cu. ft. convection microwave oven
  - Fisher & Paykel dishwasher
  - Solid-surface countertops with stainless steel sink and dimmable LED accent lighting
  - Maxxair® power vent exhaust fan with intake and touch screen control
  - Large, deep drawer for waste basket with easy access trash chute (trash chute not available on 40P, 44F and 44R)
  - King-size gel memory-foam mattress
  - 32" Samsung® LED 1080P Smart TV
  - Bose® sound bar with universal remote control
  - Sony® Blu-ray™ player
  - Ceiling fan
  - Nightstands with solid-surface tops
  - Solid-surface countertops with integrated sink and dimmable LED accent lighting
  - Textured porcelain tile shower with skylight and clear glass shower door
  - Teakwood shower seat (N/A 44F)
  - Fixed shower head and separate hand-held spray wand
  - Aqua View SHOWERMISER™ water saving system
  - Theford® macerator toilet in main bath (N/A 42)
  - Theford® Aqua-Magic toilet with foot flush in mid bath (44B, 40P)
  - Maxxair® power exhaust fan with intake
  - Whirlpool® stacked washer and dryer
  - Storage sale

#### Optional Equipment

OPTIONAL EQUIPMENT INSTALLED ON THIS VEHICLE BY MANUFACTURER

- Base price 577,980.00  
 Shadow n/c  
 Linen Glazed Cabinetry 30.00  
 Linen Front Overhead  
 Accent Wood  
 Silver Spruce Paint  
 USA Standards  
 22 SP 49000 320" 450 TAG  
 AXLE 2021 EMISSIONS NA07  
 Dishwasher Drawer  
 No Fireplace  
 10K Generator  
 Trav'ler Direct TV  
 Satellite Dish n/c  
 Dual Solar Panels 2,775.00  
 Four Batteries 1,643.00  
 Free Standing Table with 4 Chairs n/c  
 Reclining Power Sofa 100" 743.00  
 Sleepmade Gel Memory Mattress n/c

UNIT TOTAL 583,201.00

DEALER INSTALLED OPTIONS

#### DIMENSIONS

Exterior height:.....152.00"  
 Exterior width:.....101.00"

#### TIRES

Tire size (front):.....315/80R22.5  
 Tire size (mid):.....295/80R22.5  
 Tire size (rear):.....295/80R22.5

#### CAPACITIES

Fresh water tank (gals.):.....100.00  
 Gray water tank (gals.):.....62.00  
 Black water/toilet tank (gals.):.....41.00  
 Propane (lbs.):.....0  
 Propane (gals.):.....0  
 Water heater (gals.):.....0.00

\*\*\*Some dimensions may be rounded and may vary from the actual dimensions\*\*\*  
 \*\*\*Weights may be estimated calculations and may vary from the actual weight - refer to the vehicle weight labels for actual weights\*\*\*  
 Floorplans, features and specifications are subject to change without notice.