



ENTEGRACOACH®

Cornerstone



Serial #: 1JSMEACV4N16B8079
Model: 45B CORNERSTONE MHA
VIN#: 4VZVU1E98NC091739
Model Year: 2022 Dealer Name: NATIONAL INDOOR RV CENTERS
1350 HURRICANE SHOALS ROAD
LAWRENCEVILLE, GA 30043
USA

Manufacturer's Suggested Retail Price \$823,801.00

TOTAL AMOUNT DOES NOT INCLUDE STATE AND LOCAL TAXES OR LICENSE FEES. THE PRICE SHOWN ABOVE MAY OR MAY NOT BE REPRESENTATIVE OF THE ACTUAL SELLING PRICE OF SIMILAR RECREATIONAL VEHICLES IN YOUR AREA.

Standard Equipment

Optional Equipment

THE FOLLOWING ITEMS ARE STANDARD ON THIS MODEL AT NO EXTRA CHARGE

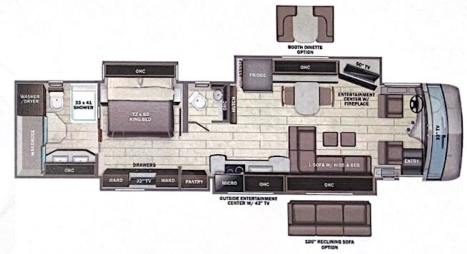
OPTIONAL EQUIPMENT INSTALLED ON THIS VEHICLE BY MANUFACTURER

- EXTERIOR
- Spartan® X3 raised-rail chassis
- Cummins® 15-liter X15 turbocharged 605 HP engine with 1,350-hp ft. torque at 1,150 RPM
- Allison® 5,000 Mile 6-speed transmission
- Side-mounted, parallel-airflow radiator
- Collision avoidance system with collision warning, adaptive cruise control and electronic stability control
- Rayco® Granning® front axle with independent front suspension - 20,000 lb. rating
- Dana® rear axle - 20,000 lb. rating
- Rayco® Granning® passive-steer tag axle with air bump - 14,000 lb. rating
- Bilstein® shocks - 60mm front axle & 46mm rear/tag axles
- Equalizer™ hydraulic automatic coach leveling
- Valid TruLine air leveling system with auxiliary air compressor
- Roof 4" arched aluminum trusses filled with batt insulation and reflective Flexfoam® topped with 3/8" plywood decking then one-piece fiberglass
- Side walls: 2-1/2" exterior walls with Alum-Tri™ welded tubular aluminum studs on 10" centers or less, filled with batt and Flexfoam® insulation, then covered with high-gloss gelcoat fiberglass (R-16)
- Floors: 2 x 4" wood trusses on 16" centers or less filled with batt and Flexfoam® insulation then topped with 3/4" 7-ply plywood decking (R-30)
- X-Bridge™ bracing welded into chassis frame
- Aqua-Hot® heated basement storage
- Onan® 12,500-watt diesel generator, with automatic start, on powered side-out tray
- 3,000-watt pure sine wave inverter
- (4) 1.16 AGM batteries (6V/90 amp hrs. ea.)
- Smart automatic transfer switch with surge protection
- (3) 15,000-BTU A/C units with heat pumps and condensation drain system
- Aqua-Hot® 45SD hydronic water and heating system with in-floor heat throughout and engine preheat
- San-Corb® macerator holding tank dump system with power gate valves, manual backup and metal door
- Tank™ ultrasonic tank monitoring system displayed on Vega Touch screen
- Exclusive Bus Armor 10" stainless-steel trim
- Power rear engine door with manual override
- Dual roof-mounted Grand Vision dual-paneled patio awnings with LED lights
- Grand® power entrance door awning with LED lights
- Grand® Ultra slideout awnings
- Grand® Ultra power window awnings
- Frameloc® dual-pane, tinted, safety-glass windows
- Lit grab handle with doorbell and keypad system for keypad entry
- 43" Samsung® QLED 4K UHD Smart TV with tilt, swivel, and extend adjustment
- JBL radio and speakers with USB port and reception
- Chrome, heated, remote-control, side-view mirrors with integrated cameras and blind-spot indicators
- Diamond Shield™ front protective film mask
- Winegard® TRAVLER satellite dish DIRECTV® - standard with USA option
- Winegard® Rayzar Automatic powered TV antenna
- Winegard® WiFi extender with 4G LTE
- Heated exterior utility center with 6" LED Firefly® tank monitoring panel
- (2) Power slideout basement storage trays
- 2.8-cu. ft. exterior Dometic® refrigerator/freezer on slideout tray

- INTERIOR
- Valid 15" digital dash with quad core graphics processor, on-board diagnostics, selector knob and ability to display traditional instrument cluster, 360° camera system or GPS navigation
- Blind spot monitoring system displayed on digital dash screen
- Xie™ 360° HD digital camera system
- Xie™ X504 instrument system with dual 9" touchscreens, IQO navigation, Bluetooth®, Sirius XM™ and AM/FM tuner, integrated camera control, house mode, whole-coach audio distribution and integrated Vega Touch coach control
- Tire pressure monitoring system (TPMS) with temperature monitoring
- E-Z Steer™ adjustable power steering assist
- Steering wheel with integrated controls for cruise, wipers, radio and Bluetooth® phone functionality
- Power tilt and telescoping steering column
- JBL premium audio TV, speaker sound system with ampie speakers and DVC subwoofer
- Ultra-Visio® one-piece wrap-around tinted windshield
- 32" Samsung® QLED 4K UHD Smart TV in front overhead
- Visio® heated and cooled leather driver and passenger seats with powered 6-way adjustment, lumbar, recline, footrest and massage functions
- Powered driver's window
- Powered flush stepwell cover
- Powered adjustable brake and accelerator pedals
- Powered front sun visors and privacy shades
- (2) dual USB ports and (2) 12V sockets for charging
- LED lit fireplace with 5,000-BTU heating element (45B, 45Z)
- Firefly multiplex system with 10" Vega Touch touchscreen for complete integration of coach controls, with remote monitoring and control (mobile app available)
- 50" Samsung® QLED 4K UHD Smart TV
- Bose® sound bar with subwoofer and universal remote control
- Sony® Blu-ray™ player
- Premium leather Visio® furniture
- Hand-laid porcelain tiled floors
- LED interior lighting
- Powered solar day and blackout night shades
- Central vacuum system
- Aise-Secure™ travel locks for all pocket doors
- Whirlpool® stainless-steel residential refrigerator with ice maker and water dispenser
- Induction cooktop with matching wood cover
- Whirlpool® 1.3-cu. ft. convection microwave oven
- Fisher & Paykel dishwasher
- Side-surface countertop with Blanco single-bowl granite sink and dimmable LED accent lighting
- Maxair® power vent exhaust fan with intake and touch screen control
- Large, deep drawer for waste basket with easy access trash chute (trash chute not available in 45F, 45R)
- 32" Samsung® QLED 4K UHD Smart TV
- Bose® Control1 Sleep Number® King-size mattress
- Sony® Blu-ray™ player
- Ceiling fan
- Nightstands with solid-surface tops
- Large cedar-lined wardrobe
- Solid-surface countertop with integrated glass sink and dimmable LED accent lighting
- Porcelain tile shower walls and floor with skylight and frameless glass shower door
- Teakwood shower seat (NA 45F)
- Pivoting shower head and separate hand-held spray wand
- Aqua View SHOWERSEER™ water saving system
- Theford® macerator toilet in main bath (NA 45Z)
- Whirlpool® stacked washer and dryer
- Storage safe

UNIT TOTAL 823,801.00

DEALER INSTALLED OPTIONS



DIMENSIONS

- Exterior height: 152.00"
Exterior width: 101.00"
Tires
Tire size (front): 365/70R22.5
Tire size (mid): 315/80R22.5
Tire size (rear): 315/80R22.5

CAPACITIES

- Fresh water tank (gals.): 100.00
Gray water tank (gals.): 62.00
Black water/toilet tank (gals.): 41.00
Propane (lbs.): 0
Propane (gals.): 0
Water heater (gals.): 0.00

Some dimensions may be rounded and may vary from the actual dimensions. Weights may be estimated calculations and may vary from the actual weight. Refer to the vehicle weight labels for actual weights. Floorplans, features and specifications are subject to change without notice.