



Aspire



Serial #: 1JSMEACV7P13B8054
Model: 44B ASPIRE MHA
VIN#: 4VZAU1D19PC093335
Model Year: 2023 Dealer Name: NATIONAL INDOOR RV CENTERS

9515 CONTRACTORS CT
MANASSAS, VA 20109
USA

Standard Equipment

THE FOLLOWING ITEMS ARE STANDARD ON THIS MODEL
AT NO EXTRA CHARGE

STANDARD EXTERIOR EQUIPMENT

- Spartan® K2 raised-rail chassis
- Cummins® L9 turbocharged 450 HP engine with 1,250 lb.-ft. torque at 1,400 RPM
- Allison® 3,000 MH 6-speed transmission
- 1,000W engine block heater
- Three-stage engine brake
- Reyco® Granning® front axle with independent front suspension - 17,000 lb. rating
- Meritor rear axle - 20,000 lb. rating (Dana® rear axle- 24,000 lb. rating on 40P)
- Tag axle with one-touch manual air dump - 12,000 lb. rating (N/A 40P)
- ABS disc brakes on front axle, drum brakes on drive and tag axle (ABS disc brakes on front and rear axle on 40P)
- 4.88 rear axle ratio (4.78 on 40P)
- Michelin® X Coach Z 295/80R22.5 tires
- Bilstein® 46mm shocks
- Tire pressure monitoring system (TPMS) with temperature monitoring
- Equalizer™ hydraulic automatic coach leveling
- 150 gal. fuel tank with dual fills (100 gal. on 40P)
- 15 gal. DEF tank with dual fills (single fill on 40P, 44D, 44R)
- 15,000 lb. hitch with 7-pin plug (10,000 lb. hitch on 40P)
- Onan® 10,000W diesel generator, with automatic start, on slide-out tray
- 3,000W pure sine wave inverter
- (2) L16 AGM batteries (6V/390 amp hrs. ea.)
- (2) 190W solar panels
- 50 amp power cord on electric powered reel
- Bergstrom dual-zone HVAC system
- (3) 15,000 BTU A/C units with heat pumps and condensation drain system
- Aqua-Hot® 400D hydronic water and heating system with in-floor heat throughout
- Sani-Con® macerator holding tank dump system with manual gate valves and manual backup
- Water hose with electric reel
- Dual roof-mounted Girard® Vision dual-pitched patio awnings with LED lights
- Girard® power entrance door awning with LED lights
- Girard® Ultra slideout awnings
- Girard® window awnings
- Lit grab handle with doorbell and keypad system for keyless entry
- 43 in. Samsung® 4K UHD Smart TV with tilt, swivel, and extend adjustment
- JBL® radio and speakers with USB port and receptacle
- Automatic LED low beam headlights, halogen high beam headlights and fog lights
- LED accent lights under passenger slideout rooms
- Porch light and motion sensor security lights
- Winegard® TRAVLER satellite dish DIRECTV® - standard with USA option
- Winegard® TRAVLER satellite dish Shaw TV - standard with CSA option
- Winegard® Rayzar Z1 TV antenna
- Winegard® WiFiRanger™ Wi-Fi extender
- Slideout basement storage tray

STANDARD INTERIOR EQUIPMENT

- Valid™ 15 in. digital dash with quad core graphics processor, on-board diagnostics and ability to display traditional instrument cluster, 360° camera system or GPS navigation
- Ramco 360° HD digital camera system
- Valid™ infotainment system with 15 in. touchscreen, Sygic navigation, Bluetooth®, Sirius XM™ and AM/FM tuner, integrated camera control and house mode whole-coach audio distribution
- 4.3 in. infotainment control touchscreen in passenger console
- E-Z Steer™ adjustable power steering assist
- Steering wheel with integrated controls for screen selection, instrument cluster navigation, media source selection, cruise, wipers and Bluetooth® phone functionality
- Manual tilt and telescoping steering column
- JBL® premium audio 5-speaker sound system with amplifier, speakers and DVC subwoofer
- 32 in. Samsung® LED 1080P Smart TV in front overhead
- Leather driver and passenger seats with powered 6-way adjustment, lumbar and footrest functions
- Firefly multiplex system with 10 in. VegaTouch touchscreen for complete integration of coach controls (mobile app available)
- 50 in. Samsung® 4K UHD Smart TV
- Bose® sound bar with subwoofer and universal remote control
- Sony® Blu-ray™ player
- Italian leather furniture
- Central vacuum system
- Aire-Secure™ travel locks for all pocket doors
- Stainless steel residential refrigerator with ice maker and water dispenser
- Induction cooktop with matching wood cover
- 1.9 cu. ft. convection microwave oven
- Fisher & Paykel dishwasher
- 32 in. Samsung® LED 1080P Smart TV
- Bose® sound bar with universal remote control
- Sony® Blu-ray™ player
- Textured porcelain tile shower with skylight and clear glass shower door
- Theford® macerator toilet in main bath
- Theford® macerator toilet in mid bath (44D, 44R, 44W)
- Theford® Aria china toilet in mid bath (40P, 44B)
- Separate washer and dryer
- Storage safe

Optional Equipment

OPTIONAL EQUIPMENT INSTALLED ON THIS VEHICLE
BY MANUFACTURER

Base price	629,730.00
Flagstone	n/c
Almond Cabinetry	30.00
Exclude Linen Front	
Overhead Accent Wood	n/c
Harvest Wheat Tile	30.00
Black Cherry Paint	30.00
USA Standards	n/c
23 SP 49000 320" 450 TAG	
AXLE 2021 EMISSIONS PA07	n/c
Dishwasher Drawer	n/c
Fireplace	n/c
10K Generator	n/c
Winegard Trav'ler	
Satellite Antenna W/DISH	
Network	113.00
Four Batteries	1,643.00
Free Standing Table with	
4 Chairs	n/c
Reclining Power Sofa 100"	n/c
Sleepmade Gel Memory	
Mattress	n/c

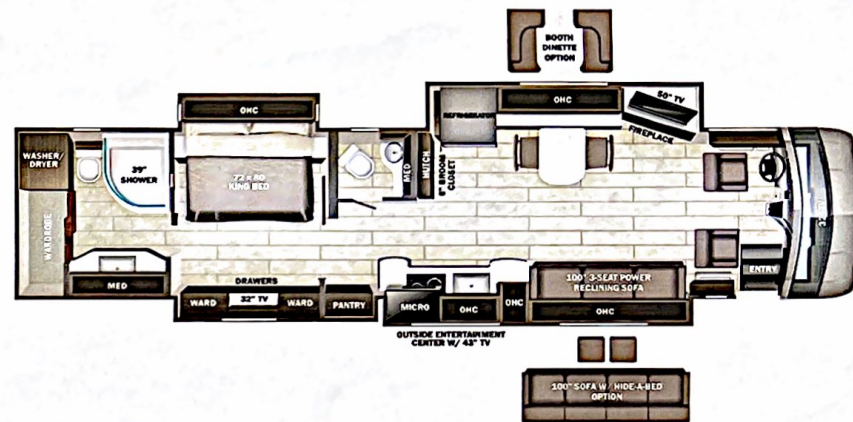
UNIT TOTAL

631,576.00

DEALER INSTALLED OPTIONS

Manufacturer's Suggested Retail Price \$631,576.00

TOTAL AMOUNT DOES NOT INCLUDE STATE AND LOCAL TAXES OR LICENSE FEES. THE PRICE SHOWN ABOVE MAY OR MAY NOT BE REPRESENTATIVE OF THE ACTUAL SELLING PRICE OF SIMILAR RECREATIONAL VEHICLES IN YOUR AREA.



DIMENSIONS

Exterior height:.....152.00"
Exterior width:.....101.00"

CAPACITIES

Fresh water tank (gals.):...100.00
Gray water tank (gals.):....62.00
Black water/toilet tank (gals.):.....41.00
Propane (lbs.):.....0
Propane (gals.):.....0
Water heater (gals.):.....0.00

TIRES

Tire size (front):.....315/80R22.5
Tire size (mid):.....295/80R22.5
Tire size (rear):.....295/80R22.5

Some dimensions may be rounded and may vary from the actual dimensions

***Weights may be estimated calculations and may vary from the actual weight

- refer to the vehicle weight labels for actual weights***

Floorplans, features and specifications are subject to change without notice.