



# Anthem



Serial #: 1JSMEACV8P14B8065  
 Model: 44B ANTHEM MHA  
 VIN#: 4VZAU1D1XPC093344  
 Model Year: 2023 Dealer Name: NATIONAL INDOOR RV CENTERS  
 1350 HURRICANE SHOALS ROAD  
 LAWRENCEVILLE, GA 30043  
 USA

**Manufacturer's Suggested Retail Price \$721,058.00**

TOTAL AMOUNT DOES NOT INCLUDE STATE AND LOCAL TAXES OR LICENSE FEES. THE PRICE SHOWN ABOVE MAY OR MAY NOT BE REPRESENTATIVE OF THE ACTUAL SELLING PRICE OF SIMILAR RECREATIONAL VEHICLES IN YOUR AREA.

## Standard Equipment

THE FOLLOWING ITEMS ARE STANDARD ON THIS MODEL AT NO EXTRA CHARGE

- EXTERIOR**
- Spartan® K2 raised-rail chassis
  - Cummins® L9 turbocharged 450 HP engine with 1,250 lb. ft. torque at 1,400 RPM
  - Allison® 3,000 MH 6-speed transmission
  - 170 amp alternator
  - Meritor® front axle with independent front suspension, integrated anti-sway bar and custom-tuned Koni® shocks- 20,000 lb. rating
  - Meritor® rear axle - 20,000 lb. rating
  - Tag axle with one-touch manual air dump - 12,000 lb. rating
  - ABS disc brakes on front axle, drum brakes on drive and tag axle
  - 4.88 rear axle ratio
  - Michelin® XZA 365/70R 22.5 in. tires (front) and XZA 315/80R 22.5 in. tires (rear)
  - Tire pressure monitoring system (TPMS) with temperature monitoring
  - Equalizer™ hydraulic automatic coach leveling
  - Valid™ Truline air leveling system with auxiliary air compressor
  - Remote air connection
  - 150 gal. fuel tank with dual fills
  - 15 gal. DEF tank with dual fills (single fill on 44D, 44R)
  - Spartan® Safehaul tow vehicle air brake system
  - 15,000 lb. hitch with 7-pin plug
  - Onan® 10,000 diesel generator, with automatic start, on powered slide-out tray
  - 3,000W pure sine wave inverter
  - (4) L16 AGM batteries (6V/390 amp hrs. ea.)
  - (2) 190W solar panels
  - 50 amp power cord on electric powered reel
  - Dual dual-zone HVAC system
  - (3) 15,000 BTU A/C units with heat pumps and condensation drain system
  - Aqua-Hot® 450D hydronic water and heating system with in-floor heat throughout and engine preheat
  - Sani-Con® macerator holding tank dump system with manual gate valves and manual backup
  - Water hose with electric reel
  - Dual roof-mounted Girard® Vision dual-pitched patio awnings with LED lights
  - Girard® power entrance door awning with LED lights
  - Girard® Ultra slideout awnings
  - Girard® Ultra power window awnings
  - Lit grab handle with doorbell and keypad system for keyless entry
  - 43 in. Samsung® QLED 4K UHD Smart TV with tilt, swivel, and extend adjustment
  - Chrome, heated, remote-control, side-view mirrors with blind-spot indicators
  - LED accent lights under passenger slideout rooms
  - Winegard® TRAV'LER satellite dish DIRECTV®
  - Winegard® Rayzar Automatic powered TV antenna
  - Winegard® WiFiRanger™ Wi-Fi extender
  - Power slideout basement storage tray
  - 2.8 cu. ft. exterior Dometic® refrigerator/freezer on slideout tray
  - Push-button, power-unlatching baggage doors with LED indicator light

- INTERIOR**
- Valid™ 15 in. digital dash with quad core graphics processor, on-board diagnostics and ability to display traditional instrument cluster, 360° camera system or GPS navigation
  - Delta Mobile Systems® aiDARS™ 1X active 360° surround view system with 14 smart radar sensors and 6 HD cameras displayed on digital dash screen
  - Valid™ infotainment system with 15 in. touchscreen, Sygic navigation, Bluetooth®, Sirius XM™ and AM/FM tuner, integrated camera control, house mode whole-coach audio distribution and integrated VegaTouch coach control
  - 4.3 in. infotainment control touchscreen in passenger console
  - E-Z Steer™ adjustable power steering assist
  - Steering wheel with integrated controls for screen selection, instrument cluster navigation, media source selection, cruise, wipers and Bluetooth® phone functionality
  - Power tilt and telescoping steering column
  - JBL® premium audio 11-speaker sound system with amplifier, speakers and DVC subwoofer
  - All-in-one automotive antenna for AM/FM/Sirius/GPS dash radio system
  - Ultra-Vision® one-piece wrap-around tinted windshield
  - Rain-sensing windshield wipers
  - 32 in. Samsung® QLED 4K UHD Smart TV in front overhead
  - Heated leather driver and passenger seats with powered 6-way adjustment, lumbar, recline and footrest functions
  - Firefly multiplex system with 10 in. VegaTouch touchscreen, for complete integration of coach controls, with remote monitoring and control (mobile app available)
  - Spyder 3.5 in. touchscreen switches throughout
  - 50 in. Samsung® QLED 4K UHD Smart TV
  - Bose® sound bar with subwoofer and universal remote control
  - Italian leather furniture
  - Powered solar day and blackout night shades
  - Central vacuum system
  - Aire-Secure™ travel locks for all pocket doors
  - Window with push out lever operation and screen
  - Stainless steel residential refrigerator with ice maker and water dispenser
  - Induction cooktop with matching wood cover
  - 1.9 cu. ft. convection microwave oven
  - Fisher & Paykel dishwasher
  - 32 in. Samsung® QLED 4K UHD Smart TV
  - Bose® sound bar with universal remote control
  - Porcelain tile shower with skylight and clear glass shower door
  - Thetford® macerator toilet in main bath
  - Thetford® macerator toilet in mid bath (44D, 44R, 44W)
  - Thetford® Aria china toilet in mid bath (44B)
  - Individual washer and dryer
  - Storage safe

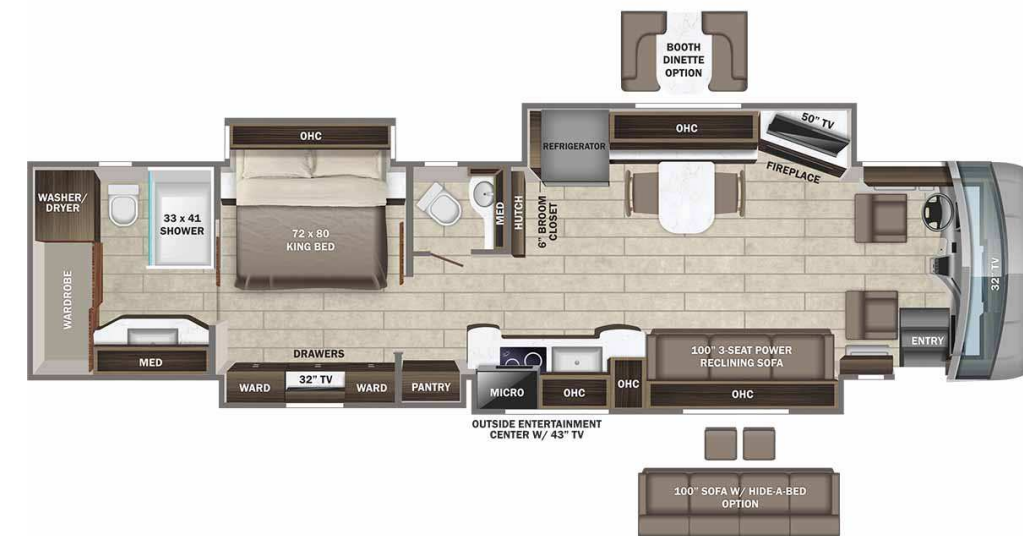
## Optional Equipment

OPTIONAL EQUIPMENT INSTALLED ON THIS VEHICLE BY MANUFACTURER

Base price	720,855.00
Bavarian	n/c
Auburn Cabinetry	30.00
Exclude Linen Front	
Overhead Accent Wood	n/c
Tapestry Bianco Tile	30.00
Cobalt Blue Paint	30.00
USA Standards	n/c
23 SP 52000 320" 450 TAG	
AXLE 2021 EMISSIONS PA08	n/c
Dishwasher Drawer	n/c
Fireplace	n/c
10K Generator	n/c
Winegard Trav'ler	
Satellite Antenna W/DISH	113.00
Network	
AGM Battery	n/c
Free Standing Table with	
4 Chairs	n/c
Reclining Power Sofa 100"	n/c

UNIT TOTAL **721,058.00**

DEALER INSTALLED OPTIONS



### DIMENSIONS

Exterior height:.....152.00"  
 Exterior width:.....101.00"

### CAPACITIES

Fresh water tank (gals.):..100.00  
 Gray water tank (gals.):...62.00  
 Black water/toilet tank (gals.):.....41.00  
 Propane (lbs.):.....0  
 Propane (gals.):.....0  
 Water heater (gals.):.....0.00

### TIRES

Tire size (front):.....365/70R22.5  
 Tire size (mid):.....315/80R22.5  
 Tire size (rear):.....315/80R22.5

\*\*\*Some dimensions may be rounded and may vary from the actual dimensions\*\*\*  
 \*\*\*Weights may be estimated calculations and may vary from the actual weight - refer to the vehicle weight labels for actual weights\*\*\*  
 Floorplans, features and specifications are subject to change without notice.